

AGENDA

Community Wellbeing Advisory Committee Meeting

Thursday 12 September 2024

The Advisory Committee Meeting of the City of Palmerston will be held in the Council Chambers, Civic Plaza, 1 Chung Wah Terrace, Palmerston, NT 0830 commencing at 5:30 PM.

Advisory Committee business papers can be viewed on the City of Palmerston website www.palmerston.nt.gov.au or at the Council Office located: Civic Plaza, 1 Chung Wah Terrace, Palmerston NT 0830.



LUCCIO CERCARELLI
CHIEF EXECUTIVE OFFICER



A Place for People

TABLE OF CONTENT

- 1 ACKNOWLEDGEMENT OF COUNTRY4
- 2 OPENING OF MEETING4
- 3 APOLOGIES AND LEAVE OF ABSENCE.....4
 - 3.1 Apologies.....4
 - 3.2 Leave of Absence Previously Granted4
 - 3.3 Leave of Absence Request.....4
- 4 DECLARATION OF INTEREST4
 - 4.1 Committee Members4
 - 4.2 Staff4
- 5 CONFIRMATION OF MINUTES.....4
 - 5.1 Confirmation of Minutes.....4
 - 5.2 Business Arising from Previous Meeting.....4
- 6 DEPUTATIONS AND PRESENTATIONS.....4
- 7 CONFIDENTIAL ITEMS4
 - 7.1 Moving Confidential Items into Open.....4
 - 7.2 Moving Open Items into Confidential.....4
 - 7.3 Confidential Items.....4
- 8 OFFICER REPORTS4
 - 8.1 Action Reports5
 - 8.2 Receive and Note Reports5



A Place for People

- 8.2.1 Community Services Network Update - August 20245
- 8.2.2 Get Active Program 20249
- 8.2.3 Laneway Management Policy - Consultation12
- 8.2.4 2024 Palmerston Youth Festival - Outcome36
- 9 INFORMATION AND CORRESPONDENCE48
 - 9.1 Information.....48
 - 9.2 Correspondence.....48
- 10 GENERAL BUSINESS48
- 11 NEXT COMMITTEE MEETING.....48
- 12 CLOSURE OF MEETING48



A Place for People

- 1 ACKNOWLEDGEMENT OF COUNTRY
- 2 OPENING OF MEETING
- 3 APOLOGIES AND LEAVE OF ABSENCE
 - 3.1 Apologies
 - 3.2 Leave of Absence Previously Granted
 - 3.3 Leave of Absence Request
- 4 DECLARATION OF INTEREST
 - 4.1 Committee Members
 - 4.2 Staff
- 5 CONFIRMATION OF MINUTES
 - 5.1 Confirmation of Minutes

THAT the Minutes of the Community Wellbeing Advisory Committee Meeting held on 13 June 2024 pages 34 to 38 be confirmed.
 - 5.2 Business Arising from Previous Meeting
- 6 DEPUTATIONS AND PRESENTATIONS
- 7 CONFIDENTIAL ITEMS
 - 7.1 Moving Confidential Items into Open
 - 7.2 Moving Open Items into Confidential
 - 7.3 Confidential Items

Nil
- 8 OFFICER REPORTS

COMMITTEE REPORT

Committee Meeting

AGENDA ITEM:	8.2.1
REPORT TITLE:	Community Services Network Update - August 2024
MEETING DATE:	Thursday 12 September 2024
AUTHOR:	Community Development Officer, Laura Hardman
APPROVER:	General Manager Community, Konrad Seidl

COMMUNITY PLAN

Family and Community: Palmerston is a safe and family friendly community where everyone belongs.

PURPOSE

This Report seeks to provide the Community Wellbeing Advisory Committee with an update on the Networks.

KEY MESSAGES

- City of Palmerston convene a number of networks to support a collaborative and coordinated approach to sector development, engagement, and information sharing. The networks meet six (6) times per year to share information, showcase best practice, identify gaps and needs, make connections, advocate, and for professional development.
- Palmerston Kids Network held a meeting on 15 August 2024. City of Palmerston provided a presentation focusing on waste and recycling.
- Palmerston and Rural Youth Services Network held a meeting on 13 August 2024. Discussions included a presentation from the Australian Human Rights Commission Speaking from Experience project regarding Sexual Harassment in the workplace. Sector updates were provided by 13 organisations.
- Palmerston Seniors Network held a meeting on 7 August 2024, this meeting shared updates from Seniors Organisations delivering activities for Seniors Month.
- City of Palmerston Seniors Day was held on the 14 August 2024 and 130 Palmerston residents enjoyed various presentations and activities.

RECOMMENDATION

THAT Report entitled Community Services Network Update - August 2024 be received and noted.

BACKGROUND

Palmerston Kids Network

The Palmerston Kids Network (PKN) brings together a dedicated group of professionals from various organisations, all committed to delivering essential services and programs for children aged 0-12 and their families. PKN meetings offer a vital platform for collaboration, allowing members to exchange information, address community concerns, and spark innovative initiatives. These gatherings are an excellent opportunity for sector updates, enabling the sharing of valuable resources and insights that benefit the entire community.

Palmerston and Rural Youth Services

Palmerston and Rural Youth Services (PaRYS) is a large group of professionals representing organisations providing services and programs paramount to improving the future for Palmerston young people. The Network provides a much-needed collaborative space for services to share funding opportunities, community programs and events for Palmerston young people. The agenda features a regular Service Spotlight segment, where organisations present an overview of their services, followed by a discussion and question and answer session to address any barriers to inclusion. Recently, the Australian Human Rights Commission presented in this segment on behalf of Speaking from Experience. Previous organisations that have presented in the Service Spotlight include Headspace Palmerston, Disability Gateway, Amity, and NTCOSS.

City of Palmerston (CoP) officers will seek advice and information from organisations and Government Services to answer questions raised by the network and invite them to attend as required.

Palmerston Seniors Network

Palmerston Seniors Network (PSN) provides networking opportunities, sector updates and a platform for attendees to raise awareness of issues critical to seniors in our community. The Network has a consistent group of four (4) to seven (7) members from a variety of Seniors Organisations and service providers in Palmerston.

DISCUSSION

Palmerston Kids Network

PKN met on the 15 August 2024. City of Palmerston provided a comprehensive update on the ongoing initiatives and future plans aimed at promoting environmental sustainability within the community. CoP is currently developing an education plan focused on waste management, recycling, and environmental conservation. In addition to attending city events with information stalls, CoP is actively seeking new opportunities to promote sustainability and is planning community tours to the Shoal Bay Education Centre. CoP sought input from PKN regarding best ways to engage with children and families.

Following the June PKN meeting and reiterated in the August PKN meeting was a focus the ongoing availability of affordable, healthy, and nutritious foods. NT Health expressed an interest in continuing to access the PKN to create a feedback and distribution contacts to ensure that the “*Healthy Choices Made Easy*” Guideline is responsive to current community food and nutrition trends, which helps address the food security and affordability conversation that occurs within PKN.

Collaborative opportunities were discussed, with network members identifying areas where their organisations could work together to enhance effectiveness of existing programs and develop new initiatives.

Palmerston and Rural Youth Services

The PARYS meeting on the 13 August, included a presentation by the Australian Human Rights Commission on behalf of Speaking from Experience is a testament to the value of this segment. It provided valuable insights and facilitated dialogue on critical issues affecting the community.

The Australian Human Rights Commission, presenting on behalf of Speaking from Experience, offers a program designed to raise awareness and provide education on the issues of sexual harassment and discrimination in the workplace. This initiative aims to empower individuals by sharing real-life experiences and offering practical strategies to create safer, more inclusive work environments. Through workshops, presentations, and discussions, the program addresses key challenges, promotes best practices, and encourages organisations to adopt proactive measures in support of workplace equality and respect.

The meeting included representatives from a diverse range of organisations working across various sectors in the community. Attendees included Mission Australia, Services Australia, the Department of Education's Student Engagement team, and CAAPS Aboriginal Corporation, Litchfield Council's Community Participation Officer, the NT Government's Redress Scheme, Catholic Care, YWNT, and Legal Aid NT and Ruby Gaea.

Palmerston Seniors Network

City of Palmerston provided an update on matters presented to Council recently including the endorsement of the Municipal Plan, and introduction of City of Palmerston's Animal By-Laws. Attendees at this meeting shared updates primarily relating to the variety of activities being delivered for Senior's month throughout August.

The group raised numerous issues for the attention of Council including repairs and maintenance issues within CoP.

Moving forward in response to suggestions and requests from Seniors at the recent Palmerston Seniors Day, a workshop activity or presentation will occur immediately preceding the network meeting to help connect Palmerston Seniors to information and support. The first workshop will occur in October and will be a presentation from the NT Seniors Concession Scheme, who due to conflicting events were unable to join us for Seniors Day.

City of Palmerston Seniors Day

City of Palmerston's annual Seniors Day event was held at the Palmerston Recreation Centre on the 14 August 2024. The event was aimed at celebrating and engaging the senior members of our community. The event was well-attended with 130 joining us on the day. A variety of activities designed to promote social interaction, provide entertainment, and share valuable information with participants were on offer throughout the day.

Beginning with morning tea, participants were given the opportunity to interact with 13 service and support agencies holding information stalls. This was followed by informative presentations from several local organisations, offering insights and resources tailored to the needs of seniors in the community.

These included:

- Talk from Author and native plant expert, John Brock,
- Native Plant Giveaway,
- Cyber Security information from the Commonwealth Bank,
- Personal and Property Protection information from Neighbourhood Watch NT,
- Recycling from NTRS and,
- Functional Strength and falls prevention from Vitality Health and Rehabilitation,
- Advanced Personal Care Planning from COTA NT.

A buffet lunch was provided, offering participants a chance to enjoy a meal while socialising in a relaxed setting with live music from Kim Kool.

Live entertainment and Drag Queen Bingo, hosted by Drag Territory, were also featured, adding an element of fun and engagement.

A new ice-breaker activity was introduced in 2024 to promote social connection. The activity required participants to exchange their dots of all one colour with other participants they had not met before to collect 5 dots of different colours. 69 attendees successfully completed the activity, with lots of positive feedback shared.

Overall, the event successfully achieved its goal of providing a day of enjoyment, information, and social interaction for the senior community. Feedback from participants indicated that the event was appreciated, particularly the opportunity to socialise and participate in a variety of activities.

A Place for People

CONSULTATION AND MARKETING

There was no consultation required for this Report.

POLICY IMPLICATIONS

There are no policy implications for this Report.

BUDGET AND RESOURCE IMPLICATIONS

There are no budget or resource implications relating to this Report.

RISK, LEGAL AND LEGISLATIVE IMPLICATIONS

This Report addresses the following City of Palmerston Strategic Risks:

1. Community Safety
Failure of Council to effectively plan and deliver its role in community safety.

STRATEGIES, FRAMEWORK AND PLANS IMPLICATIONS

This report relates to the Inclusive, Diverse and Accessible Policy Framework.

COUNCIL OFFICER CONFLICT OF INTEREST DECLARATION

We the author and approving officer declare that we do not have a conflict of interest in relation to this matter.

ATTACHMENTS

Nil

COMMITTEE REPORT

Committee Meeting

AGENDA ITEM:	8.2.2
REPORT TITLE:	Get Active Program 2024
MEETING DATE:	Thursday 12 September 2024
AUTHOR:	Community Development Officer, Kate Townsend
APPROVER:	General Manager Community, Konrad Seidl

COMMUNITY PLAN

Family and Community: Palmerston is a safe and family friendly community where everyone belongs.

PURPOSE

This Report seeks provide the Palmerston Wellbeing Advisory Committee with information on the physical activity and wellbeing initiative Get Active run by the City of Palmerston.

KEY MESSAGES

- Get Active has been running in Palmerston, in some iteration since 2005.
- Get Active delivers 32 weeks of free physical activity and wellbeing opportunities to the Palmerston Community each year.
- Recent improvements to program delivery have reinvigorated and injected new energy into Get Active to see it achieve the highest levels of engagement of the program and its previous iterations on record.

RECOMMENDATION

THAT Report entitled Get Active Program 2024 be received and noted.

BACKGROUND

The Program, now known as Get Active originated in 2005 under the title “Palmlesstonnes” (Palm-less-tonnes) as a 10-week weight loss challenge. Pamlesstonnes was recognised with several awards from 2006 to 2008 and formed part of the strategy implemented by City of Palmerston to achieve recognition as a WHO Safer Community.

In 2009 the Palmlesstonnes and City of Darwin’s version - Darwinlite merged to become Activate NT – MBF Healthy Lifestyle Challenge.

In 2011 Federal funding received by the City of Palmerston under the “Healthy Palmerston” initiative saw Palmerston separate from City of Darwin in the delivery of the program with a growing emphasis on physical activity.

The City of Palmerston has consistently delivered the program since its inception, eventually rebranding to Get Active in 2020.

DISCUSSION

The current Get Active program draws its core aims from the 2009 Activate NT initiative:

- Increase participant’s level of physical activity

A Place for People

- Increase social interaction and community surveillance for a safe community
- Form and support partnerships with other community activities and services that promote healthy lifestyles.

The program delivers 32 weeks of free physical activity and wellbeing activities every year, taking a short break over Christmas as well as in the dry season.

All activities are delivered within the municipality of City of Palmerston with the curation of the schedule a fine balance between attracting new and innovative activities to Palmerston, whilst also supporting existing activities and providers.

The following image provides the Get Active program for August-September 2024:



Get Active Palmerston August - September **FREE CLASSES FOR THE PALMERSTON COMMUNITY**

	TUESDAY	WEDNESDAY	THURSDAY	FRIDAY		SUNDAY
	6 Aug 3 Sept 13 Aug 10 Sept 20 Aug 17 Sept 27 Aug 24 Sept	7 Aug 4 Sept 14 Aug 11 Sept 21 Aug 18 Sept 28 Aug 25 Sept	8 Aug 5 Sept 15 Aug 12 Sept 22 Aug 19 Sept 29 Aug 26 Sept	9 Aug 6 Sept 16 Aug 27 Sept 23 Aug 30 Aug		11 Aug 8 Sept 18 Aug 15 Sept 25 Aug 22 Sept 1 Sept 29 Sept
	PICKLE BALL	ZUMBA WITH UR FITNESS DJ	PILATES WITH ALEX	SOCIAL VOLLEYBALL		YOGA WITH LARA
MONDAY - NO CLASSES	7pm - 8pm Palmerston Tennis Centre, Moulden	6pm - 6:45pm SWELL Palmerston, Group Fitness Room	5pm - 6pm SWELL Palmerston, Group Fitness Room	From 6pm Palmerston Indoor Sports Centre, Yarrowonga (entry via Tulagi Road, Yarrowonga)	SATURDAY - NO CLASSES	9am - 10am SWELL Palmerston, Group Fitness Room
	Pickleball is a paddle sport that combines elements of tennis, badminton, and ping-pong using a paddle and plastic ball with holes. It is a game that is appropriate for players of all ages and skill levels. Rules for pickleball are simple, making it a great introductory sport. How to book: No bookings required. What to bring: Hat, water bottle and running shoes.	Zumba® Fitness is a Latin-inspired dance workout. Perfect for everybody! Often called exercise in disguise. How to book: Via the website urfitnessdj.com.au What to bring: Running shoes, water bottle and a towel.	The targeted strengthening and stretching exercises help ease tight muscles, improve flexibility and reduce tension throughout the body. Mat Pilates offers a low-impact, full-body workout suitable for people of all fitness levels. How to book: Via the website pilateswithalexhurt.com What to bring: Yoga/exercise mat.	Come and try indoor beach volleyball for the first time, or practice and develop your skills. Enjoy the social, friendly atmosphere with no commitment to trainings/teams required. How to book: No bookings required. What to bring: Running shoes, water bottle and comfortable clothing.		Yoga incorporates gentle progressive exercise, breath control and meditation. This class will be a mix of hatha/ vinyasa and yin. Starting with vinyasa, progressing to a flow sequence and ending with slow hatha/yin style poses. Pace is slower than most typical vinyasa classes, allowing for a focus on relaxation. How to book: Via SWELL App - Active World. What to bring: Yoga mat, water bottle and comfortable clothing.
FOR MORE INFORMATION, VISIT GETACTIVE.PALMERSTON.NT.GOV.AU						

Over its 20 years of program delivery, Get Active has evolved from its original heavy emphasis on body composition and weight loss to become more sustainable and holistic in its approach, focusing on the social and emotional benefits of physical activity as well as the physical health benefits. In 2023/2024 Get Active engagement reached a peak not previously seen before with over 700 participants registered to attend activities. Participants have now come to eagerly await each new schedule, often jumping on to pre-register for activities for the full eight (8) weeks before the schedule has commenced.

The benefits of Get Active are varied and far ranging and have been identified to include:

- Making physical activity and wellbeing accessible to people of all social and economic backgrounds.
- Increasing accessible opportunities for people of varying needs including parents, those with varying mobility, skill and experience levels.
- Supporting local Palmerston businesses.
- Attracting new activity providers and helping them to become established in Palmerston.
- Giving participants a taste of a variety of diverse activities to help them find something that appeals to their unique needs and interests.

A Place for People

- Attracting participants from Darwin and the rural area to visit Palmerston more often.
- Providing opportunities for social connection and cohesion.
- Improve community safety by activating public places.
- Build relationships with local service providers which can be used for other events and activities.
- Provide healthy competition to the Palmerston market to keep the cost of physical activity and wellbeing opportunities accessible.

In 2025 Get Active will celebrate its 20th anniversary with engagement levels continuing to grow matched only by the economic and social benefits to the Palmerston Community.

CONSULTATION AND MARKETING

There was no consultation or marketing required during the preparation of this Report.

POLICY IMPLICATIONS

There are no policy implications for this Report.

BUDGET AND RESOURCE IMPLICATIONS

There are no budget or resource implications relating to this Report.

RISK, LEGAL AND LEGISLATIVE IMPLICATIONS

There are no risk, legal and legislative implications relating to this Report.

STRATEGIES, FRAMEWORK AND PLANS IMPLICATIONS

This Report relates to the following City of Palmerston Strategies, Framework and Plans:

- [Inclusive, Diverse & Accessible Policy Framework](#)

COUNCIL OFFICER CONFLICT OF INTEREST DECLARATION

We the author and approving officer declare that we do not have a conflict of interest in relation to this matter.

ATTACHMENTS

Nil

COMMITTEE REPORT

Committee Meeting

AGENDA ITEM:	8.2.3
REPORT TITLE:	Laneway Management Policy - Consultation
MEETING DATE:	Thursday 12 September 2024
AUTHOR:	Civil Operations Team Leader, Nickolas Rakkas
APPROVER:	General Manager of Infrastructure, Nadine Nilon

COMMUNITY PLAN

Future Focused: Palmerston is an innovative city that sustains itself through the challenges of the future.

PURPOSE

This Report presents to the revised draft Laneway Management Policy (Policy) to the Safety Advisory Committee for its engagement and feedback.

KEY MESSAGES

- The Laneway Management Policy was first adopted in November 2020 and is due for review.
- The Policy aims to preserve municipal laneways and guide decisions on their treatment or closure, ensuring a consistent, evidence-based approach.
- The review of the Policy, and subsequent application process has been extensive and provides an updated framework for the management of Council owned laneways and methods for evaluating laneways that is consistent and transparent in accordance with Council's obligations
- The most significant changes to the policy are the introduction of;
 - consideration of all treatments potentially applicable to a laneway, including amending existing closures, night-time only closure and permanent closure, and
 - a tiered approach for treatment assessment based on laneway category, enabling a more efficient process for some laneways.
- The application of the laneway categories, based on impact of active transport routes (ie additional distance a person needs to walk/cycle), has also been calculated for all laneways, enabling residents to be easily informed of the category and process for potential closure/treatment if requested.
- Consultation of the revised policy included writing to landowners' adjacent laneways and physical signage on Essential laneways.
- Public consultation of the revised policy commenced on 3 July and ended on 31 July.
- The public feedback received will be collated and presented to Council for consideration in preparation for the adoption of the revised policy.
- Feedback received from the City of Palmerston Community Safety and Wellbeing Advisory Committees will also be considered and incorporated into the final draft to be presented to Council.
- The final draft is anticipated to be presented to Council by October 2024.

RECOMMENDATION

1. THAT Report entitled Laneway Management Policy - Consultation be received and noted.
2. THAT the Committee provides the following feedback to the Council regarding the draft Laneway Management Policy:
 - a. *Insert Feedback comments (ie. The committee supports the draft policy.)*

BACKGROUND

Council adopted its first Laneway Management Policy in November 2020. The purpose of the Policy is to preserve the network of laneways within the municipality and to guide the decision-making process when considering a form of treatment or closure. The Policy is aimed at ensuring a consistent, evidence-based approach to laneways management and treatments, particularly in relation to public requests for closures.

<https://palmerston.nt.gov.au/community/community-safety/lanewaymanagement>

Council requested at the 2nd Ordinary Council Meeting held on 16 May 2023, that the Laneway Management Policy was reviewed ahead of its initial schedule of late 2024.

Laneway Closure Request – Broadarrow Circuit Woodroffe

Moved: Deputy Mayor Morrison

Seconded: Councillor Garden

1. THAT Report entitled *Laneway Closure Request – Broadarrow Circuit Woodroffe* be received and noted.
2. THAT following consideration of the *Broadarrow Circuit Laneway Request* received 9 January 2023, that the laneway remains open at this time, with a further review and report to Council at the Second Ordinary Meeting in November 2023.
3. THAT a review of the Laneway Management Policy be brought forward to occur by the Second Ordinary Meeting in November 2023.

CARRIED 10/839 – 16/05/2023

At the 1st Ordinary Council Meeting of December 2023 Council made the following decisions:

13.1.7 Laneway Treatment and Laneway Management Policy Review

Moved: Deputy Mayor Eveleigh

Seconded: Councillor Henderson

1. THAT Report entitled *Laneway Treatment and Laneway Management Policy Review* be received and noted.
2. THAT Council endorse the following key elements to be included in the Laneway Management Policy review, with a draft to be presented to Council by March 2024.
 - a. Consideration of a tiered closure process based on laneway categorisation.
 - b. Night-time closures as an option to be incorporated as part of the application and assessment process.
 - c. Process and timing for amending existing and potential future treatments of laneways that are not permanently closed.
 - d. Reconsideration of annual review process for laneways with existing treatments.
3. THAT Council approve the continuation of the existing twelve temporary part-time laneway closures and seven full-time closures for a further twelve-month period, with a report to be prepared for Council by December 2024 for review, or as required following the updating of the Laneway Management Policy,

CARRIED 10/1138 – 12/12/2023

At the 2nd Ordinary Council Meeting of March 2023 Council made the following decisions:

13.1.3 Draft Laneway Management Policy

Moved: Councillor Fraser

Seconded: Councillor Eveleigh

1. THAT Report entitled Draft Laneway Management Policy be received and noted.
2. THAT a Council workshop be held by end May 2024 to review the draft Laneway Management Policy.

CARRIED 10/1252 – 19/03/2024

Following a Council workshop, feedback from Councillors has been incorporated into the draft Policy and relevant flowcharts.

This report presents the revised draft Laneway Management Policy to the Safety Advisory Committee as part of the consultation process.

DISCUSSION

The Laneway Management Policy has been in effect since November 2020, refer to attached **Attachment 8.2.3.1**.

A review of the Policy has been undertaken to improve alignment with Council's position on laneway matters, improve efficiency and community outcomes. Changes to the Policy provide additional flexibility to community requests regarding treatments and transparency of the categorisation of each laneway.

The revised Policy being recommended for endorsement for consultation is provided at **Attachment 8.2.3.2**. A tracked changes version is not provided due to the number of changes to the Policy.

Some key highlights of changes incorporated into the revised Policy are:

- Tiered Laneway Treatment process, linked to Laneway Categorisation, which is related to active transport movement, noting the categorisation calculation has not changed, however the names of the categories have been updated.
 - Low – Non-essential
 - Medium – Less essential
 - High – Essential
- Laneways with existing treatments will continue indefinitely once applied, or until a relevant application for an amendment is received.
- Amendments to treatments can be requested through a Laneway Application.

The changes to the Policy comprise of lessons learnt since the implementation of current Policy and discussions at Council workshops.

Tiered Laneway Treatment Process

A tiered framework linked to laneway transport category provides transparency on Councils position with each category and clarity on the process which determines a proposed treatment. The approach improves Councils decision-making ability when considering laneway treatments and tailors the community engagement to improve the identification of community impacts of a proposed treatment

A laneway categorisation has been completed for all council laneways, classifying them into one of three (3) categories, based on their active transport impact. This is the calculation of the impact of additional distances to travel to different points of interest, such as schools and shops, and is consistent with the previous categorisation calculation.

The Transport category for all laneways is included at **Attachment 8.2.3.3**, and will be available for the public to access. Laneway applications will be reviewed in line with their category and predetermined process (refer to flow charts).

A Laneway Policy Flow Chart for each laneway category was created to visually guide residents through the application process and to outline the process council will follow on receiving a submission. The flowcharts will be available publicly for use alongside an application.

- Essential Laneway Flowchart **Attachment 8.2.3.4**,
- Less Essential Flowchart **Attachment 8.2.3.5**
- Non-Essential flowchart **Attachment 8.2.3.6**

Additional Treatment Options in Application

The revised Policy now includes provisions for reactivating temporarily closed laneways and proposing new treatments, including nighttime closures. It enhances the decision-making process for laneway treatment and the removal of permanent closure requests.

Treatment Review Period

The reviewed Policy proposes that laneway treatments applied will continue indefinitely, with a review of current treatments be presented to council each council term to ensure alignment with current municipal strategies. This approach reduces the administrative requirement to seek annual Council approval to extend existing endorsed laneway treatments already endorsed by council.

Fees

The current fee associated with the permanent closure of a Laneway has been amended within the revised policy and is now linked to the City of Palmerston fees and charges rather than being listed within the Policy. The fee will only apply to the permanent closure of a laneway when amalgamated and will be included in the fees and charges booklet following finalisation of the updated Policy.

Next Steps

The active consultation period was live for 28 days with the period ending on 31 July 2024. Following this period, the consultation outcomes will be collated into a report and presented to Council in October 2024. This will include the outcomes of engagement with Council's Community Safety and Wellbeing Advisory Committees.

CONSULTATION AND MARKETING

Completed community engagement:

- Comprehensive information made available on the website including previous laneway consultation reports
- Supporting documents that help community understand the updates
- Opportunity to provide feedback via online, in person, email or over the phone for an extended period of 28 days (normally 21 days)
- Letters directly to impacted stakeholders (residents immediately adjacent a laneway)
- Signage with consultation details on all 'essential category' laneways
- Information made available via social media platforms
- NT Newsprint ad.

Engagement outcomes will be collated into a final report and presentation to Council in October 2024, this will include feedback received from Council's Community Safety and Wellbeing Advisory Committees.

The following City of Palmerston staff were consulted in preparing this Report:

- Marketing and Communications Manager

POLICY IMPLICATIONS

When adopted, the revised Council Laneway Management Policy will replace the current policy.

BUDGET AND RESOURCE IMPLICATIONS

When the revised Laneway Management Policy is endorsed by Council, the City of Palmerston fees and charges will be revised to reflect the cost changes.

RISK, LEGAL AND LEGISLATIVE IMPLICATIONS

This Report addresses the following City of Palmerston Strategic Risks:

1. **Community Safety**
Failure of Council to effectively plan and deliver its role in community safety.
7. **Environmental Sustainability**
Failure of Council to clearly articulate, plan for and deliver prudent and responsible environmental ambitions.

The revised Policy outlines the purposes of preserving the network of laneways within the City and guides decisions to ensure vital functions of laneways are considered when assessing treatment options. The revised Policy is aimed at ensuring a consistent, evidence-based approach to laneway management and treatments, particularly in relation to public requests for closures.

STRATEGIES, FRAMEWORK AND PLANS IMPLICATIONS

The Community Infrastructure Plan, Inclusive, Diverse and Assessable Policy Framework and the Disability Inclusion and Access Plan have been considered in the development of the revised Laneway Management Policy.

COUNCIL OFFICER CONFLICT OF INTEREST DECLARATION

We the author and approving officer declare that we do not have a conflict of interest in relation to this matter.

ATTACHMENTS

1. Council Policy Laneway Management Original [8.2.3.1 - 6 pages]
2. Revised Laneway Management Policy [8.2.3.2 - 6 pages]
3. Laneway Transport Category [8.2.3.3 - 4 pages]
4. Laneway Policy Flowchart DRAFT NR 20240207 RE V_06_-_ Essential [8.2.3.4 - 1 page]
5. Laneway Policy Flowchart DRAFT NR 20240207 RE V-_ Less- Essential [8.2.3.5 - 1 page]
6. Laneway Policy Flowchart DRAFT NR 20240207 RE V_-_ Non- Essential [8.2.3.6 - 1 page]



Name:	Laneway Management Policy		
Type:	Council Policy		
Owner:	Chief Executive Officer		
Responsible Officer:	Director City Growth and Operations		
Approval Date:	17/11/2020	Next Review Date:	17/11/2024
Records Number:	435343	Council Decision:	9/1385

1 PURPOSE

The purpose of this policy is to:

- preserve the network of laneways within the City, and
- guide decision making where a request to implement some form of treatment or closure of a laneway is received.

2 PRINCIPLES

The principles that apply to the management of laneways are:

- Council recognises the purpose and function that laneways were created and where practicable will retain laneways as a component of the pathway network
- Council will advocate for the engagement of all relevant government agencies that may impact on social behaviour issues and influence community responses and views
- The occurrence of anti-social and criminal behaviour is a community issue that may not be practical to address by laneway treatments or closures
- The implementation of temporary laneway treatments should not exceed twelve months without being reviewed by Council to assess effectiveness and costs
- A laneway that provides an overland stormwater flow path will not be considered for permanent closure
- Council recognizes that community expectations over time may change and that there will be different views within the community at any one time
- Wherever possible Council will seek to respond to the broad interests of the community when determining any treatment or closure of a laneway
- The permanent closure of a laneway within the road reserve requires the consent of the Minister for Local Government and the Minister responsible for the Control of Roads Act

3 DEFINITIONS

For the purposes of this Policy, the following definitions apply:

Term	Definition
Public Open Space (POS) Access Laneway	A laneway connecting a street to POS, and the land comprising the laneway is within the surveyed lot forming the POS
Street Access Laneway	A laneway connecting two streets and the land is a continuation of the road reserve
Laneway Category	A method to calculate the significance of the laneway based on the level of disruption to active transport activities and overland stormwater movement
Permanent Laneway Treatment	A modification of a laneway intended to remain in place for greater than twelve months that may include: <ul style="list-style-type: none"> • Bicycle chicane/s, • Lighting. Permanent closure is not a form of laneway treatment.
Temporary Part Time Closure	Typically involves daily closing of a laneway with locked gates typically between the hours of 9:00pm and 6:30am with the duration of the daily closing as determined by Council with a maximum period of twelve months. The time of closure will be assessed to suit the circumstances of the laneway.
Temporary Full Time Closure	The closure of the laneway with locked gates with the duration of closure as determined by Council with a maximum period of twelve months.
Permanent Closure	The closing of a laneway by the creation of a new lot that is defined by the boundaries of the abutting properties with the intent to dispose of the lot and consolidate into abutting properties
Active Transport	Relates to physical activity undertaken as a means of transport. It includes travel by foot, bicycle, motorised scooters, and non-motorised vehicles.
Relevant Government Agencies	NT Police Force, Territory Housing, Territory Families, and other agencies involved with the provision of social services
Public Utility Easement (Linear or Transverse)	An easement established in the interest of a public utility provider for the purpose of protecting an underground service/s located within (linear) or across (transverse) a laneway
Overland Stormwater Flow Path	Several laneways provide severe rainfall (1:100 yr) event overland flow paths to mitigate the risk of property inundation

4 POLICY STATEMENT

4.1 Rationale

- 4.1.1 The retention of laneways to enable active transport options is Council's preferred option.
- 4.1.2 Where social issues associated with anti-social or criminal activity are occurring within the vicinity of a laneway the initial response is to engage with relevant government agencies to identify reactive and proactive intervention options, prior to considering the use of laneway treatments.
- 4.1.3 The permanent closure of a laneway will be considered by Council in special circumstances where the closure of the laneway does not unreasonably impact on active transport options within the vicinity of the laneway. The impact assessment includes several information sources outlined in the Policy.

4.2 Laneway Application and Assessment Requirements

- 4.2.1 Landowner application to close a laneway
For Council to assess a laneway an application form must be completed by all abutting property owners. The form will include the following:
 - a) Reason for requesting closure of the laneway e.g. anti-social behaviour associated with use of the laneway
 - b) Details of incidents reported to NT Police providing dates and times
 - c) Period of occupancy of the property
 - d) Acknowledgment that a financial contribution will be paid to Council on request prior to instigation of a permanent closure where Council determines closure is possible
 - e) Acknowledgement that payment to Council is required for the portion of the closed laneway that may be amalgamated with their property prior to undertaking the permanent closure following Ministerial consent for permanent closure (where required).

NOTE:

1. Where an abutting property owner is the Northern Territory Government, Council will liaise directly with the relevant agency.
2. Payment of a financial contribution will not be required at the time of requesting closure of a laneway – only after Council determines that permanent closure is possible.
3. Where a resident is not the owner of the property, the property owner is required to make the application as the property owner will be required to agree to amalgamate any closed portion of laneway and make a payment for the land based on the methodology set out in Clause 4.4.3.

4.2.2 Information to be collected for report to Council

- 4.2.2.1 Where the completed application forms have been received from all property owners, Council will undertake the following actions:
 - a) Request information from NT Police relating to the vicinity of the laneway covering the most recent quarterly reporting period

- b) Survey a minimum 20 properties within the immediate vicinity of the laneway
- c) Install a CCTV camera at one end of the laneway for a period of not less than three weeks to obtain laneway usage data
- d) Request information from relevant government agencies and non-government organisations on local issues
- e) Calculate the Laneway Category using the approved methodology
- f) Assess the laneway in respect of stormwater function
- g) Obtain information on underground services within the laneway.

NOTE:

1. Council will respond to a request for closure no later than three months from receipt of a written request submitted in accordance with Clause 4.2.1.

4.2.3 Consideration by Council

4.2.3.1 Where the above requirements and information have been completed Council will consider the appropriate action to be taken. The options that Council may consider are:

- a) Decline the request;
Where a request has been declined Council will not consider a further request within twelve months unless there is a demonstrable and significant change in circumstances from the original request.
- b) Request relevant government agencies and non-government organisations to provide responses to address the cause of the anti-social behaviour;
- c) Where the information indicates that a targeted strategy may assist in addressing the cause of the anti-social behaviour Council will advocate for responses from the relevant government agencies and non-government organisations.
- d) Consider a treatment commensurate with the identified issues;
- e) Where treatment does not involve trialling part-time closures, the treatment may be permanent. Where the Council approves the trialling of a part-time closure, the closures will occur for a maximum period of twelve months (from implementation).

NOTE:

1. Council will determine the review period based on the specific circumstances of the laneway. The purpose of setting a twelve month maximum period is to ensure that the information and monitoring that may be required is undertaken in a timely manner.

4.2.4 Review by Council

4.2.4.1 Where Council has approved a trial treatment or facilitated a response by relevant government agencies and non-government organisations the following review periods will apply:

- a) Request relevant government agencies and non-government organisations to provide responses to address the cause of the anti-social behaviour.



4.2.4.2 Council will review the effectiveness of the responses no sooner than six months from implementation.

4.2.4.3 Where the responses have not achieved a positive outcome however the expectation is that the strategy/response may deliver reduced incidents of anti-social behaviour, the Council may defer a decision on the laneway for a further six month period.

4.2.4.4 At the conclusion of the initial six months or after twelve months where there is no demonstrable reduction in anti-social behaviour Council may consider permanent closure of the laneway subject to the required criteria being met.

- b) Consider a treatment commensurate with the identified issues;

Where the Council approves the trialling of a night-time closure, the closures will occur for a maximum period of twelve months (from implementation) before the effectiveness of the trial is assessed. During the trial the laneway use, and other relevant information will be collected.

4.2.4.5 Subject to the information collected, Council may choose to cease the treatment or extend the treatment for further period not exceeding twelve months.

4.3 Criteria for permanent closure of a laneway

4.3.1 Council may seek the permanent closure of a laneway where the following criteria are satisfied:

- a) The laneway does not provide an overland stormwater flow path; and
- b) The Laneway Category is rated a Low or Medium; and
- c) Agreement with abutting landowners ensures that the whole of the laneway will be disposed of through amalgamation with the abutting properties; and
- d) The abutting landowners have acknowledged and agreed to the contribution to costs for the closure of the laneway and the payment for the portion of closed laneway (inclusive of easements where applicable) to be amalgamated with their property; and
- e) The laneway use is less than 30 movements per day.

NOTE:

1. The purpose of the policy is to avoid the retention of small and isolated parcels of land held by Council that serve no long term benefit or purpose for the community.

4.4 Landowner contribution and purchase of land

4.4.1 The cost to undertake the permanent closure of a laneway may be up to \$16,000 and comprises public notices, survey, land titles and development costs, and removal of the constructed path.

4.4.2 Council will require each abutting landowner to contribute \$500 towards these costs. Payment will be required prior to instigating public consultation for the proposed closure.

- 4.4.3 Where a landowner has agreed to amalgamate a portion of the closed laneway with their property, the value of the closed portion will be calculated as follows:
- The value of the original property will be determined,
 - The combined (original plus portion of laneway) property will be calculated,
 - The amount to be paid will be the difference between the two values.
- 4.4.4 The values will be determined by a Certified Practising Valuer and subject to review by the Valuer General where required.

NOTE:

1. Payment of a financial contribution will not be required at the time of requesting closure of a laneway – only after Council determines that permanent closure is possible.
2. Payment for a portion of land to be acquired will not be required at the time of requesting closure of a laneway – only after the permanent closure has been approved by the relevant Ministers, where required, and the subdivision of the land has been determined to enable the valuation methodology to be applied.

5 ASSOCIATED DOCUMENTS

- 5.1 City of Palmerston Laneway Classification Guidelines

6 REFERENCES AND RELATED LEGISLATION

- 6.1 *Local Government Act 2008*
6.2 *Local Government Act (Administration) Regulations 2008*
6.3 *Local Government Act (NT) 2008 Guidelines (Disposal of Property)*



Name:	Laneway Management		
Type:	Council Policy		
Owner:	Chief Executive Officer		
Responsible Officer:	General Manager Infrastructure		
Adopted Date:	[Approval Date]	Next Review Date:	[Next Review]
Records Number:		Council Decision:	

1 PURPOSE

This Policy outlines the criteria for preserving the network of laneways within the City, and guides decision making where a request to implement or remove a form of treatment of a laneway is received.

2 PRINCIPLES

The principles that apply to the management of laneways are:

- Council recognises the purpose and function that laneways were created and where practicable, will retain laneways as a component of the pathway network.
- Council will act on Laneway Applications in line with the laneways given category.
- Council will advocate for the engagement of all relevant government agencies that may impact on social behaviour issues and influence community responses and views.
- The occurrence of anti-social and criminal behaviour is a community issue that may not be practical to address by laneway treatments or closures.
- A laneway that provides an overland stormwater flow path will not be considered for permanent closure.
- Council recognises that community expectations over time may change and that there will be different views within the community at any one time.
- Wherever possible Council will seek to respond to the broad interests of the community when determining any treatment or closure of a laneway.
- The permanent closure of a laneway within the road reserve requires the consent of the Minister for Local Government and the Minister responsible for the *Control of Roads Act*.

3 DEFINITIONS

For the purposes of this Policy, the following definitions apply:

Term	Definition
Active Transport	Relates to physical activity undertaken as a means of transport between points of interest. It includes travel by foot, bicycle, motorised scooters, and non-motorised vehicles.
Community	Public, residents, or rate payers
Fees and charges	Charges outlined in City of Palmerston's Fees and Charges.
Full Time Closure	The closure of the laneway with locked gates with the duration of closure as determined by Council. (Maximum of 12 months which will revert to open after this period)
Laneway	A laneway provides connectivity between roads and/or public open space. It could exist as road reserve or as part of a lot. It is typically less than 10m in width.



Laneway Application	A request to implement or remove a form of treatment of a laneway.
Laneway Category (Transport Category)	A method to calculate the significance of the laneway for Active Transport based on the level of disruption to points of interest and desirable destinations.
Laneway Transport Category - Essential	High significance for active transport options.
Laneway Transport Category - Less Essential	Moderate significance for active transport options.
Laneway Transport Category - Non-Essential	Low significance for active transport options.
Overland Stormwater Flow Path	Where the laneway provides overland flow paths to mitigate the risk of property inundation in a major storm rainfall (1:100 yr) event.
Part Time Closure or Night Closure	Typically involves daily closing of a laneway with locked gates, typically between the hours of 9:00pm and 6:30am with the duration of the daily closing as determined by Council. The time of closure will be assessed to suit the circumstances of the laneway.
Permanent Closure	The closing of a laneway by the creation of a new lot that is defined by the boundaries of the abutting properties, with the intent to dispose of the lot and consolidate into abutting properties.
Public Utility Easement (Linear or Transverse)	An easement established in the interest of a public utility provider for the purpose of protecting an underground service/s located within (linear) or across (transverse) a laneway.
Relevant Government Agencies	NT Police Force, Territory Housing, Territory Families, and other agencies involved with the provision of social services.

4 POLICY STATEMENT

4.1 Rationale

- 4.1.1 The retention of laneways to enable active transport options is Council’s preferred option.
- 4.1.2 Where social issues associated with anti-social or criminal activity are occurring within the vicinity of a laneway the initial response is to engage with relevant government agencies to identify reactive and proactive intervention options, prior to considering the use of laneway treatments.
- 4.1.3 The permanent closure of a laneway will be considered by Council in special circumstances where the closure of the laneway does not unreasonably impact on active transport options within the vicinity of the laneway. The impact assessment includes several information sources outlined in the Policy.

4.2 Laneway Application

4.2.1 For Council to consider treatment of a laneway, a Laneway Application form must be completed and submitted.

4.2.2 The form will include the following to be accepted by Council:

- a) All abutting property owners' signatures, with the acknowledgment of cost applied.
- b) Reasons for requesting the proposed treatment, with supporting documentation.
- c) Indication of the proposed laneway treatment, being temporary part time closure, temporary full-time closure, permanent closure, or laneway opening.
- d) Details of incidents reported to NT Police with dates, times, and promise/report numbers.
- e) Period of occupancy of the property owner.
- f) A non-refundable fee will be paid to Council once it determines the actions from the proposed Laneway Application in accordance with the Fees and Charges.
- g) Acknowledgement that payment to City of Palmerston is required for the portion of the closed laneway that may be amalgamated with their property prior to undertaking the permanent closure following Ministerial consent for permanent closure (where required).

4.2.3 The amendment of an existing laneway treatment will be considered by Council in the form of a Laneway application, the submission must contain or have attached relevant documents to support the proposed change in treatment or removal of treatment.

4.2.4 Where a request has been previously considered Council, a further application will not be considered for twelve months unless there is a demonstrable and significant change in circumstances from the original request.

NOTE:

- Council will respond to a Laneway request no later than three months from receipt of a conforming Laneway Application.
- The implementation of a treatment can take up to 12 months to apply.
- Where an abutting property owner is the Northern Territory Government, Council will liaise directly with the relevant agency.
- Where a resident is not the owner of the property, the property owner is required to make the application.

4.3 Laneway Assessment

Where a completed application for closure has been received, Council will undertake the following actions in line with the laneway Transport Category.

4.3.1 Essential

Laneways categorised as Essential are not automatically considered to meet the requirements for laneway treatment. Requests for treatment of Essential laneways will be presented to Council for consideration of treatment prior to community consultation or extensive data gathering.

Preliminary investigation

- a. Assess the laneway in respect of stormwater function.
- b. Obtain information on underground services within the laneway.
- c. Request information from NT Police relating to the vicinity of the laneway covering the most recent quarterly reporting period.
- d. Request information from relevant government agencies and non-government organisations on local issues.
- e. Report to Council to determine whether to proceed to detailed investigation.

Detailed Investigation

- a. Survey a minimum 20 properties within the immediate vicinity of the laneway
- b. Install a CCTV camera at one end of the laneway for a period of not less than three weeks to obtain laneway usage data.
- c. Report to Council.
- d. If treatment approved, relevant fee (if applicable) to be paid to Council in accordance with the City of Palmerston fees and charges.

4.3.2 Less Essential

Laneways with a category of Less Essential may meet the requirements for laneway treatment, subject to consultation and investigation.

Preliminary investigation

- a. 4-week localised consultation through signage at the Laneway to seek feedback from the community.
- b. Assess the laneway in respect of stormwater function.
- c. Obtain information on underground services within the laneway.
- d. Request information from NT Police relating to the vicinity of the laneway covering the most recent quarterly reporting period.
- e. Request information from relevant government agencies and non-government organisations on local issues.
- f. Report to Council whether to proceed to detailed investigation.

Detailed Investigation

- a. Install a CCTV camera at one end of the laneway for a period of not less than three weeks to obtain laneway usage data.
- b. Report to Council.
- c. If treatment approved, relevant fee (if applicable) to be paid to Council in accordance with the City of Palmerston fees and charges.

4.3.3 Non-Essential

Laneways with a category of non-essential are considered to have the highest potential for treatment to be applied.

- a. Assess the laneway in respect of stormwater function.
- b. Obtain information on underground services within the laneway.
- c. Request information from NT Police relating to the vicinity of the laneway covering the most recent quarterly reporting period.
- d. Request information from relevant government agencies and non-government organisations on local issue.
- e. Four-week localised consultation through signage at the Laneway to seek feedback from the community.
- f. Report to Council for decision.
- g. If treatment approved, relevant fee (if applicable) to be paid to Council in accordance with the City of Palmerston fees and charges.

4.4 Criteria for permanent closure of a laneway

Permanent closure of a Laneway will only be considered where all of the following criteria are satisfied:

- a. The Laneway does not provide an overland stormwater flow path.
- b. Agreement with abutting landowners ensures that the whole of the laneway will be disposed of through amalgamation with the abutting properties.
- c. The abutting landowners have acknowledged and agreed to the contribution to costs for the closure of the laneway and the payment for the portion of closed laneway (inclusive of easements where applicable) to be amalgamated with their property.
- d. The Laneway does not form part of an emergency access or escape.
- e. Service Authorities agree to the closure of the laneway with appropriate easements in place (where relevant).

NOTE: The purpose of the policy is to avoid the retention of small and isolated parcels of land held by Council that serve no long-term benefit or purpose for the community.

4.5 Amending Existing Laneway Treatments (Not Permanently closed)

4.5.1 Council may consider amending an existing laneway treatment, Council requires the following;

- a. Completed Laneway Application with proposed new treatment; and
- b. Supporting documentation, the submission must contain or have attached relevant documents to support the proposed change in treatment.

4.5.2 Council will consider the Laneway Application and supporting documents for decision.

4.5.3 Council will determine if alterations will be applied to the laneway treatment.

4.5.5 Council will not consider changes to laneway treatment under 12 months after a Council decision has already been implemented, amended, or declined.

4.6 Review process for existing laneway treatments

4.6.1 Laneways with active treatments applied will continue indefinitely until Council approves a change in treatment.

4.6.2 Laneways that have a treatment in place will be reviewed for alignment to the Policy each Council term.

4.7 Landowner contribution and purchase of land

4.7.1 All associated costs relating to the amalgamation of the laneway is the responsibility of the applicant or absorbing landowners.

4.7.2 A deposit will be required prior to actioning public consultation for the proposed permanent closure, in accordance with Council's fees and charges.

4.7.3 The deposit may be used as part of the amalgamation cost, with any unused funds returned if the land transfer doesn't proceed.

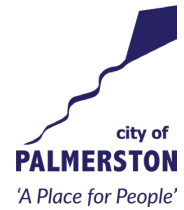
4.7.4 Where a landowner has agreed to amalgamate a portion of the closed laneway with their property, the value of the closed portion will be calculated as follows:

- a. The value of the original property will be determined,
- b. The combined (original plus portion of laneway) property will be calculated,
- c. The amount to be paid will be the difference between the two values.

4.7.5 The Land values and cost will be determined by a Certified Practising Valuer and subject to review by the Valuer General where required.

5 ASSOCIATED DOCUMENTS

5.1 City of Palmerston Laneway Category Flow Charts



LANEWAY CATEGORISATION

Laneways are labelled into an 'Active Transport Category' as per below table. The category's consider the level of connectivity each laneways provides to the broader community such as proximity to public transport, shopping centres and schools.

Location	Non-essential	Less-essential	Essential
Achernar Ct to Tracey Park		•	
Alidade Cres to Wye Ct	•		
Altair Ct and Capella Ct	•		
Antares Ct to Tracey park		•	
Astrolabe Ct to Emery Ave	•		
Bagshaw Cres to Campden Ct	•		
Bagshaw Cres to Chung Wah Tce		•	
Bagshaw Cres to Houschilt Ct	•		
Bailey Cct to President Park		•	
Baldwin Dr to Azimuth Ct		•	
Beacon Cct to Sabbald Cct	•		
Beacon Ct to Chung Wah Tce	•		
Beaumont Park to Chung Wah Tce			•
Betelgeuse Ct to Chung Wah Tce	•		
Betelgeuse Ct to drain	•		
Boileau Ct to drain on Gunter Cct		•	
Bonson Tce to Calandrinia Ct		•	
Bonson Tce to Manson Ct		•	
Bonson Tce to Staghorn Ct		•	
Bristow Ct to Maurice Tce		•	
Broadarrow Cct to Drain			•
Buckland Ct to Rennie Ct	•		
Burnett Ct to Drive Ave			•
Cairn Ct to Chung Wah Tce	•		
Cairn Ct to Vernier park	•		
Caladium Ct to Tilston Ave			•
Callie Ct to Lambrick Ave - East	•		
Callie Ct to Lambrick Ave - West	•		
Canonbury Cct to Gwyn park	•		
Canonbury C ct to Temple Tce		•	
Canopus Ct to James Cct	•		

COMMITTEE AGENDA

Attachment 8.2.3.3

Location	Non-essential	Less-essential	Essential
Capella Ct and Woodroffe drain	•		
Castor Ct to Temple Tce			•
Chemnitz Ct to Elrundie Ave	•		
Chin Gong Cct to Elrundie Ave	•		
Chin Gong to Widdup park			•
Chung Wah Tce to Strawbridge Cres			•
Compass Ct to James Cct	•		
Compass Ct to Tracey park	•		
Connaught Ct to Bakewell Primary School		•	
Connaught Ct to Rudolph Ct	•		
Cordia Ct to park on Lancewood St	•		
Cornwallis Cct to Temple Tce		•	
Corrick Ct to Lindsay Park	•		
Crake Ct to Forrest Pde		•	
Cuthbertson Cres to Elrundie Ave		•	
Cycas Ct to Temple Tce			•
Denebola Ct to Woodroffe Ave			•
Dillon Cct to Chung Wah Tce			•
Dutton Ct to Elrundie Ave			•
Dwyer Cct to Golf course - North		•	
Dwyer Cct to Golf Course - South	•		
Edgecumbe Ct to unnamed park		•	
Excelsa Ct to Rosebery Park	•		
Excelsa Ct to Lobelia Ct		•	
Extension to Tanami Ct to Lambrick Ave	•		
Favenc Ct to Chug Wah Tce	•		
Flametree Cct to Chung Wah Tce	•		
Flockhart Dr to Elrundie Ave to Campfire Ct to Brumby Ct			•
Forrest Pde to Landsborough St	•		
Goodall Ct to Tanami Ct	•		
Greer Ct to Widdup Park			•
Gumnut Way to Livistona Park	•		
Gumnut Way to Staghorn Ct		•	
Gunter Cct to drain	•		
Gunter Cct to Sibbald Cct			•

COMMITTEE AGENDA Attachment 8.2.3.3

Location	Non-essential	Less-essential	Essential
Hannibal Cres to Temple Tce			•
Harrison Cct to Sacred Heart Primary school	•		
Harrison Cct to Sextant Ct	•		
Harrison Cct to Temple Tce	•		
Helio Ct to Sibbald park	•		
Hogan Ct to Ascension park	•		
Invar Ct to Gunter Cct	•		
Kafcaloudes Cres to Schombacher Cct			•
Kriewaldt Cct to golf course			•
Landsborough St to Bill Lewis Park	•		
Lela Ct the Elrundie Ave	•		
Lobelia Ct to Rosebery Drv		•	
Lorna Lim Tce to unnamed park	•		
Mannikan Ct to Chung Wah Tce			•
Mannikan Ct/ Bakewell shops to Palmerston Escarpment Park			•
Martin Ct to Palmerston golf course		•	
Maurice Tce to Napier Ct			•
McGuire Cct to Elrundie Ave			•
McInnis Cct to Elrundie Ave		•	
McInnis Cct to President Park	•		
Melastoma Drv to Livistona Park	•		
Melastoma Drv to Temple Tce	•		
Moorhen to Buscall Ave	•		
Muckaninnie ct and Moulded drain/ Elrundie Ave	•		
Muckaninnie ct to Lindsay Park	•		
Noltenius Cct to Bagshaw Cres			•
Palmerston cct to Mansfield st			•
Parmentier Pl to Moulden Drain	•		
Politis ct to Beaumont Park Moulden	•		
Priest cct to Emery Ave			•
Priest cct to Phineaus ct		•	
Raffles road to Rosetta st	•		
Rilstone ct to Temple Tce Moulden			•

COMMITTEE AGENDA Attachment 8.2.3.3

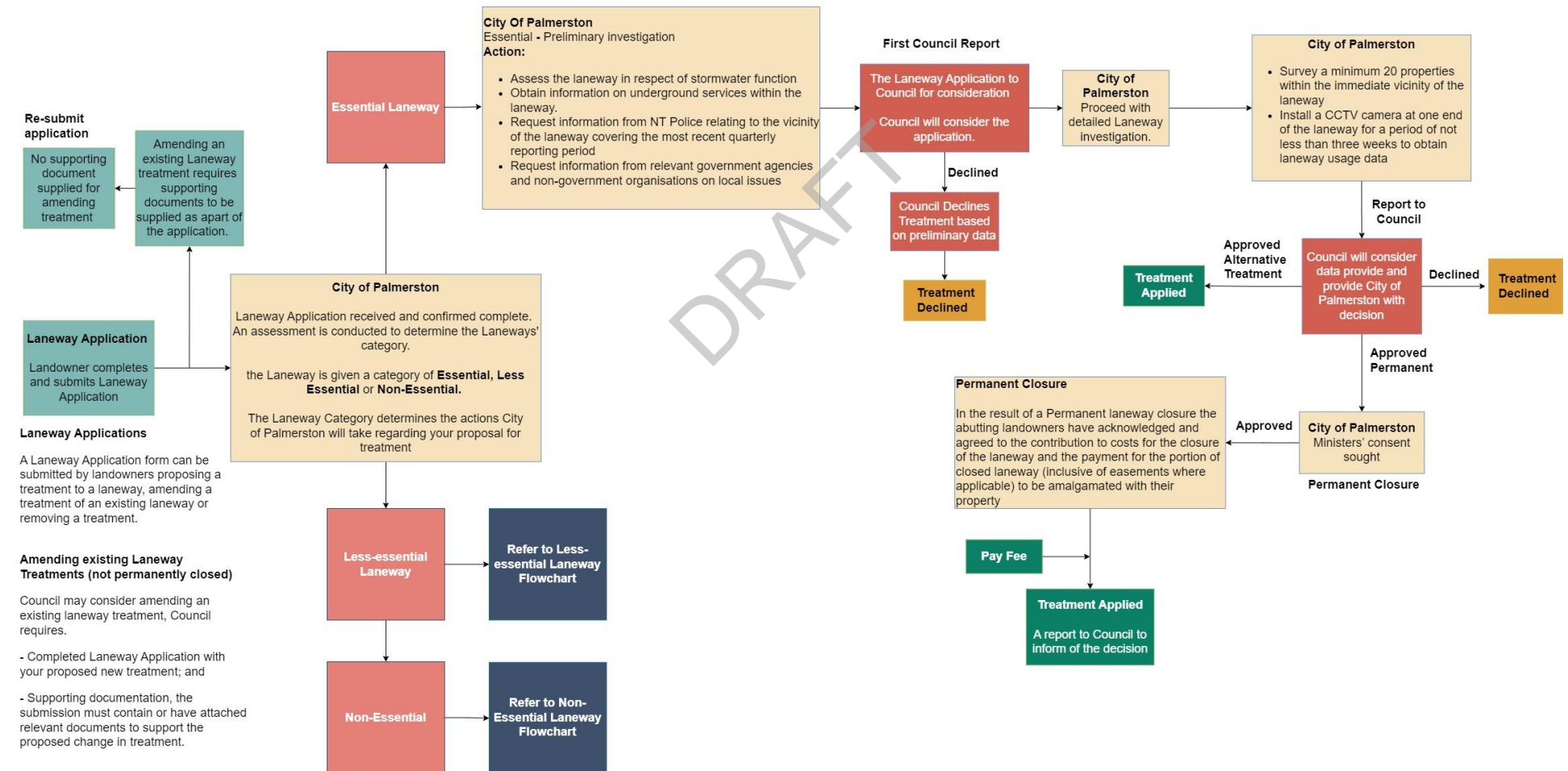
Location	Non-essential	Less-essential	Essential
Shortrede Ct to drain on Baldwin Dr	•		
Sibbald Cres to unnamed park	•		
Squatters Rd to Drain	•		
Squatters Rd to Walter Rd	•		
Staghorn Ct to Livistona Park	•		
Star Ct to Zenith Cct	•		
Stint Ct to drain on Lambrick Ave	•		
Stint Ct to Forrest Pde	•		
Strawbridge Cres to Politis Ct	•		
Tanami Ct to Lambrick Ave	•		
Transit Cct to Vernier Park		•	
Troughton Ct to Tracey park - North	•		
Troughton Ct to Tracey Park - South	•		
Vega Ct to Woodroffe Ave			•
Vernier Cct to Vernier Park		•	
Verniwr Cct to Emery Ave		•	
Waterhouse Cres to Widdup Cres		•	
Widdup Cres to Widdup Park	•		
Wiesener Ct to Woodroffe drain	•		
Wilfred Ct to Widdup Park	•		
William Ct to Widdup Park		•	
Zenith Cct to Palmerston cricket club oval and Woodroffe Primary School	•		

City of Palmerston - Laneway Management Policy Flowchart Active Transport Categorisation - Essential Laneway

Timeframe to first council report

Essential: 6 weeks

The the complete processing of a Laneway Application can take up to 12 months to reach a decision

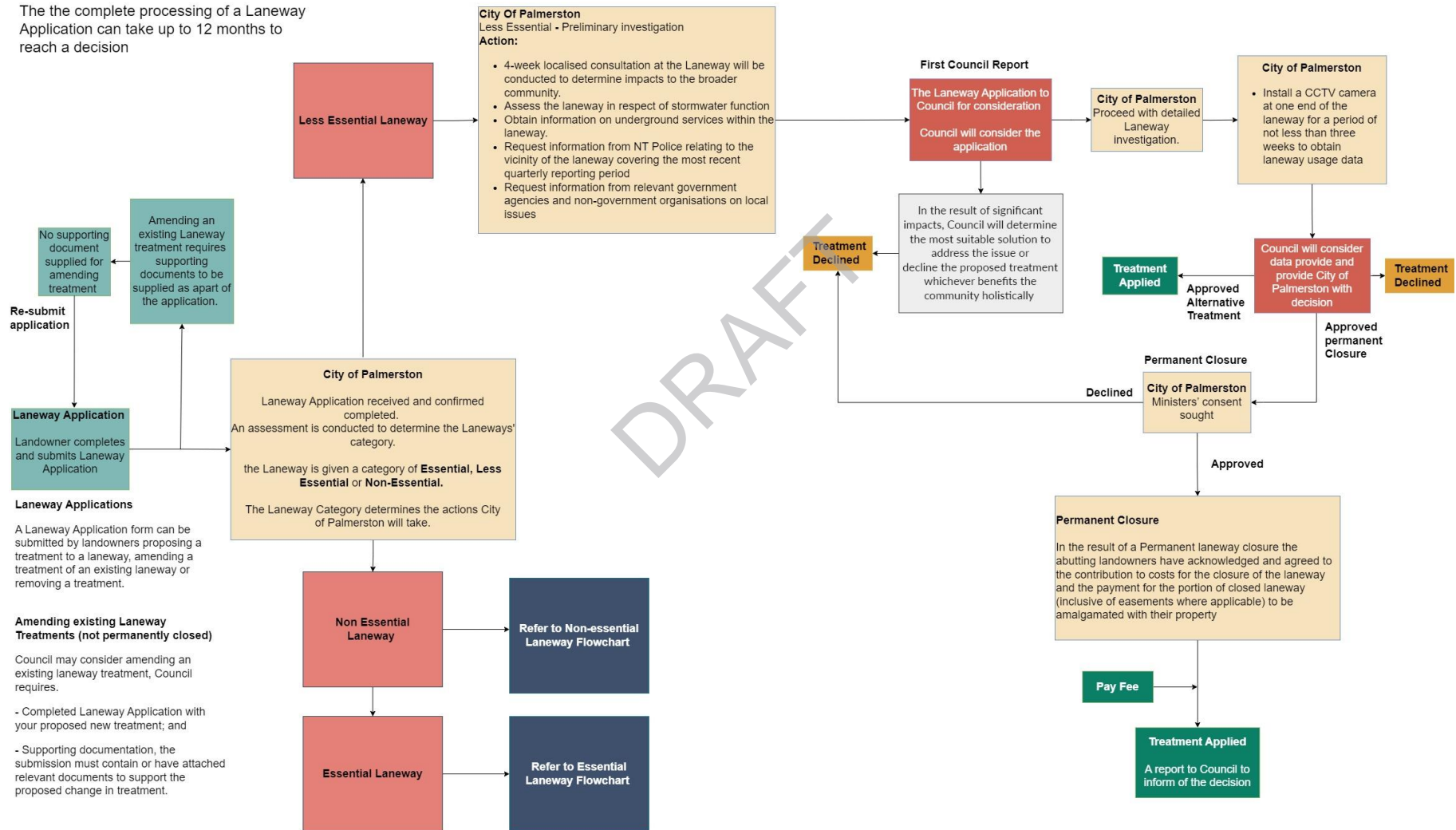


City of Palmerston - Laneway Management Policy Flowchart Active Transport Categorisation - Less Essential

Timeframe to first council report

Less Essential: 8 Weeks

The complete processing of a Laneway Application can take up to 12 months to reach a decision

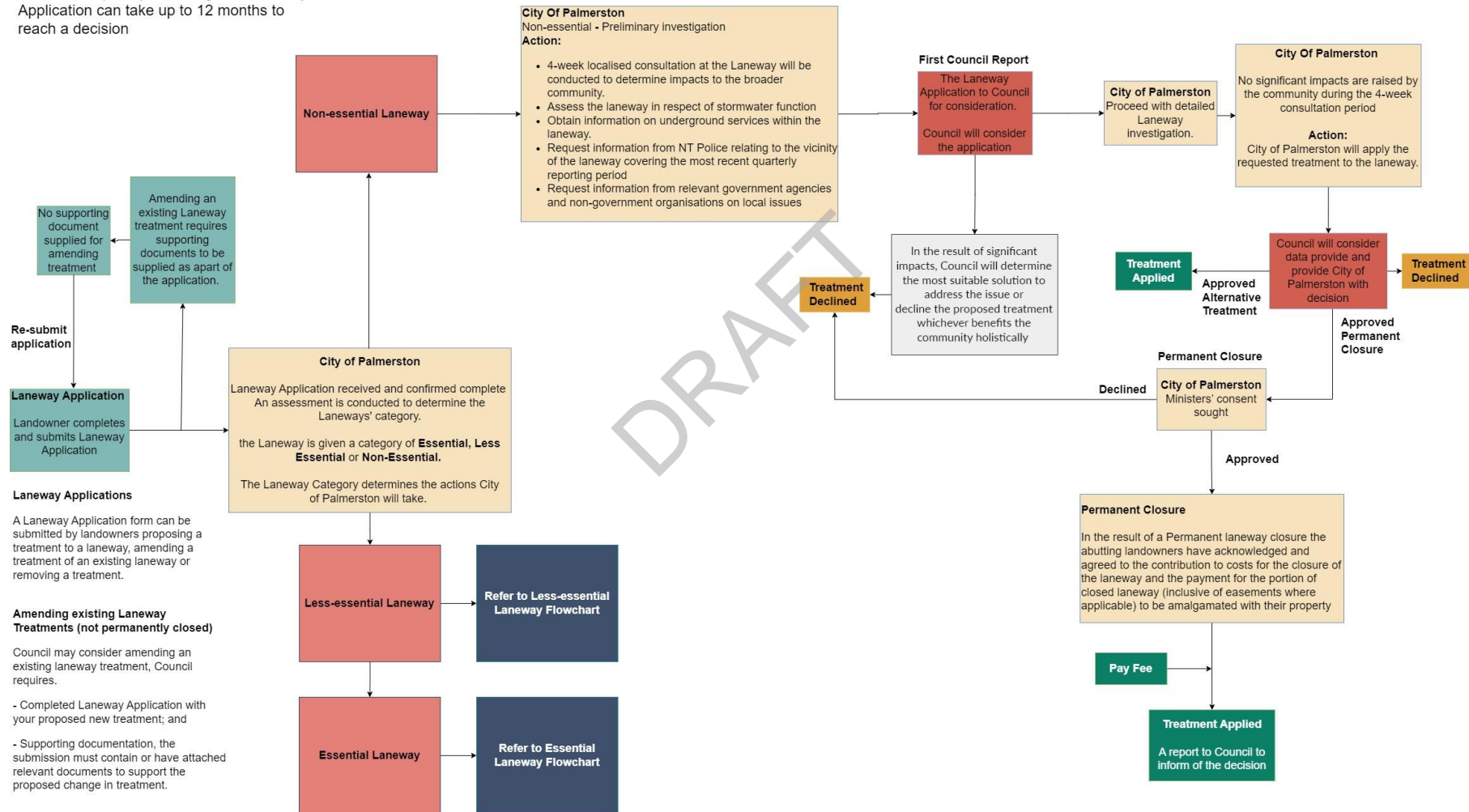


City of Palmerston - Laneway Management Policy Flowchart Active Transport Categorisation - Non-essential

Timeframe to first council report

Non-Essential: 8 Weeks

The complete processing of a Laneway Application can take up to 12 months to reach a decision



COMMITTEE REPORT

Committee Meeting

AGENDA ITEM:	8.2.4
REPORT TITLE:	2024 Palmerston Youth Festival - Outcome
MEETING DATE:	Thursday 12 September 2024
AUTHOR:	Community Development Officer, Laura Hardman
APPROVER:	General Manager Community, Konrad Seidl

COMMUNITY PLAN

Family and Community: Palmerston is a safe and family friendly community where everyone belongs.

PURPOSE

This Report provides the Committee with an overview of the 2024 Palmerston Youth Festival held between 6 and 12 July 2024.

KEY MESSAGES

- The fifth Palmerston Youth Festival (PYF) was a huge success, attracting a record total attendance of 7,390 from the 6 - 12 July 2024.
- Youth under 25 represent 39% of the Palmerston Community, the PYF contributes to community wellbeing, safety, pride and improved social outcomes.
- The festival was made up of seven (7) events, two (2) major and five (5) bespoke events, over seven (7) days and included competitions and giveaways worth \$25,000.
- Geekfest Top End was once again the most popular drawcard of the festival with a crowd of over 4,200. Two (2) new events were added to the program, Pamper Palmy and NAIDOC Pool Party.
- Events and activities were designed to be free, accessible, inclusive and to cater to a broad range of interests including culture, music, sports, arts, hobbies, and technology.
- The Northern Territory Government provided grant funding of \$300,000 to City of Palmerston, to deliver the Palmerston Youth Festival and the funding agreement is in place for another two (2) years. City of Palmerston committed \$50,000 towards the festival plus significant in-kind support and staff resources.

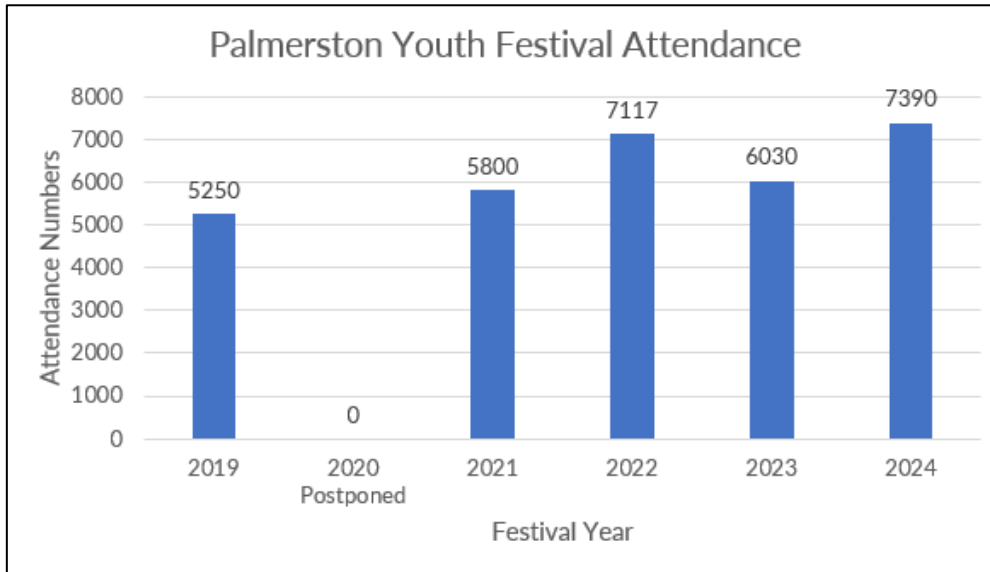
RECOMMENDATION

THAT Report entitled 2024 Palmerston Youth Festival - Outcome be received and noted.

BACKGROUND

In November 2018, the Northern Territory Government (NTG) committed \$300,000 per annum grant funding, to coordinate a week-long Palmerston Youth Festival during the July school holidays. City of Palmerston has successfully delivered five (5) Palmerston Youth Festival's between 2019 to 2024.

Each Festival has delivered two (2) major and five (5) bespoke events, with over 31,000 attendees since 2019.



DISCUSSION

Palmerston Youth Festival (PYF) has been a beacon of community spirit and creativity for over five (5) years, growing in both size and significance with each passing year. Organised by City of Palmerston, with sponsorship from the Northern Territory Government, the festival is a testament to the power of collective effort and shared passion.

The 2024 festival opened with Geekfest Top End drawing over 4,200 visitors and showcasing our community's love for geek culture.

EVENT	ATTENDANCE
Geekfest Top End	4,280
NAIDOC Pool Party	660
Youth Pride	35
Sportsfest	450
Palmy's Got Talent	180
Pamper Palmy	280
Wrap Up Party	1,505
TOTAL	7,390

Throughout the festival, a variety of free events catered to a wide range of interests. From arts, culture and sports to wellness activities, there was something for everyone. Each day offered unique experiences, allowing participants to explore new hobbies, develop skills, and connect with peers. Inclusivity is a foundation of the festival's enduring appeal, ensuring that everyone feels welcome and valued.

The festival also featured 11 competitions, providing an opportunity for over 70 young individuals to share in the prize pool.

Festival Highlights:

- The 2024 PYF witnessed a high turnout and enthusiastic engagement, with over 7,300 individuals participating and attending the various events and activities held throughout the seven (7) days. This significant attendance highlighted the festival's appeal and its success in attracting and captivating young people from the community.
- The PYF Program of Events booklet enabled young people to have all the information about the week, the program was distributed to Palmerston Schools and businesses.

- Two (2) new events debuted this year, Pamper Palmy and NAIDOC Pool Party. Both events were very popular with young people and provided a fresh element to the festival.
- The successful delivery of the festival was made possible through the collaborative efforts of City of Palmerston with NGT, community groups, individuals and organisations supporting the week of events. These partnerships brought together resources, expertise, and shared visions to create a vibrant and memorable Festival experience for youth. The strong community involvement and collaboration exemplified the shared commitment towards empowering and supporting young individuals.



KONNECTED - Immersive Digital Experience

Geekfest Top End 6 July: Recreation Centre, Library and Goyder Square

The highly anticipated Geekfest Top End (GFTE) did not disappoint, attracting over 4,200 fans of geek culture to open the festival. Geekfest Top End is Northern Territory's (NT) longest running geek convention and includes one of the NT's biggest Cosplay competitions. 23 young people entered the Cosplay competition and parade, showcasing their creativity and craftsmanship to develop costumes and embody the characters from movies, anime, video games and comics. Fans enjoyed meeting Cosplay special guest Stephanie Vander Heyden, winner of the Australian 2022 annual global Cosplay Central Crown Championship, and then went on to represent Australia at the finals in Chicago.

Over 1000 people enjoyed the major attraction 'Konnected', an immersive, interactive experience navigating through underwater vistas, and transitioning into a Tron-like universe and neon tunnels before merging back into the futuristic honeycomb universe.

K-Pop workshops and performance with PSYCHE was a huge hit with the audience, showing the skills and demand for Korean popular music.

The library was action packed all night with young people embracing laser tag and the silent disco. For those over 18, they could enjoy the 18+ gaming room with games such as TEKKEN and Street Fighter.

A draw card for a lot of attendees to Geekfest is the gaming. The options were a plenty such as Super Smash Bros. Ultimate, and Game Jam. The finals of Super Smash Bros. Ultimate was played on the big stage, with the audience on the edge of their seats cheering on the finalists.

Other attractions included STEM Lab, Artist Alley, Power-up parade with Darwin Symphony Orchestra, Board Game Lounge, Interplanetary Battle Cards, Just Dance, Brick It Station, Circus Area, Ghost Busters, Gadgets and Games, Indie Corner and a fire show to close the night.

"Participating in Geekfest has been incredibly beneficial for our youth-led gaming group. Providing us with invaluable experience in event planning and management, supporting our growth and offering mentorship along the way. The City of Palmerston staff, were strong advocates for youth involvement, ensuring that young people had a voice and felt comfortable expressing themselves. We truly felt like a

A Place for People

valuable part of the event. Geekfest’s emphasis on youth delivering an event targeted at youth has been instrumental in fostering a sense of ownership and empowerment among our members”. - Level Up Gaming

“It was an amazing event, and we had a great time and fantastic engagement”. - Northern Territory Government - Department of Corporate and Digital Development



VIPs Open PYF with a Bang



Lazer Tag in the Library



Hoppo Cards – Artist Alley



Cosplayers

NAIDOC Pool Party 7 July, SWELL

This new event for the 2024 program added a focus on cultural awareness and celebration. The Youth Festival, coinciding with NAIDOC Week, was a significant opportunity to honour and recognise the rich cultural heritage of Australia's Aboriginal and Torres Strait Islander (ATSI) peoples.

The Pool Party featured various engaging activities. Attendees had the chance to work with local artists to paint a Coaster Bus provided by CDC NT. DJ Charly mentored young people, helping to create a lively party atmosphere. Additionally, 23 youth took up the opportunity to learn and practice their skateboarding skills at Build Up Skateboarding’s energetic workshop.

The Palmerston Lions provided a BBQ for attendees, handing out 500 sausages, 240 burgers, 35 loaves of bread, six (6) kg of fruit salad, and three (3) litres of yogurt. In partnership with the Palmerston Youth Centre (PYC), drop-in cultural and arts activities were available throughout the pool party, providing attendees with immersive and enriching opportunities to learn, participate, and celebrate.

The event was a tremendous success, drawing approximately 660 attendees from diverse backgrounds.

A Place for People



CDC Bus with PYF mascot Tentacle Mike



DJ Charly



Youth Dancing with DJ Charly CDC



Bus spray painted by the community

Youth Pride 8 July, Palmerston Recreation Centre

Youth Pride offered a nurturing and inclusive space for LGBTQIA+ young people to authentically express themselves and build connections within a supportive community. This event celebrated and fostered visibility and affirmation, encompassing the diverse dimensions of the LGBTQIA+ community.

Youth Pride served as a powerful display of advocacy for social change, providing a platform for young people to amplify their voices and champion the rights and dignity of LGBTQIA+ individuals.

The event included:

- Gender Clothes Swap
- Pride Trivia delivered by Tina Colada
- Pride Bingo with Prawn Cracker Spice
- Youth Pride Alter-ego Art Activities delivered in partnership with Darwin Visual Arts:
 - Session 1: Facilitator Kim Donald led a painting session aimed at helping youth express their alter egos through creativity.
 - Session 2: Facilitator David Dalzell provided a variety of activities catering to different ages, from very young children (with parents/carers) to young teenagers.

The event was attended by 35 youth and their families, with a large portion of attendees staying for the duration. This level of engagement highlights the appeal and impact of the performers and activities.



Boy2Boyz Art activity - hero alter ego



Pride Panel Community after Pride Trivia



Sportsfest 9 July, Palmerston Recreation Centre

Sporting enthusiasts of Palmerston embraced the opportunity to try a range of sporting activities and competitions at the Palmerston Recreation Centre. Sportsfest attracted 450 young people to celebrate sports and physical activity in a fun and inclusive event.

A highlight was our special guests, three (3) Paralympians Tom O'Neil Thorne, Jaylen Brown and Jannik Blair, World Champion CJ McCarthy, Japanese Paralympian Rio Fujimoto and Darwin Salties players Daniel Babb and Mitchel Brauer.

The young people also had the chance to try out wheelchair basketball to experience the strength and skill required.

The 3x3 Football competition was a huge hit, with the young people enjoying the competitive spirit and camaraderie.

The event was delivered in partnership with the Palmerston and Regional Basketball Association (PaRBA), and included:

- Esports
- Corn hole
- Basketball shootout.

By engaging in sports and exercise young people develop valuable skills, such as leadership and sportsmanship, while also forming relationships with their peers. This event offers opportunities for personal growth and achievement, regardless of skill level, contributing to the overall well-being and development of youth.

A Place for People



3x3 Football Competition



ESports with PaRBA



Basketball shoot out



Roller Basketball

Palmy's Got Talent 10 July 2024, Durack Community Arts Centre

This event saw 12 contestants perform with over 180 audience members watching from the Durack lawns.

Contestant preparation for this event began in May with two (2) workshops delivered by Anna Thomson to increase the confidence and capability of young people considering entering. On the night, contestants aged 10-14 performed a variety of acts including K-pop, Karaoke, singing, musical theatre, acrobatics, dancing, and a band! A spontaneous "Show Us Your Talent" segment erupted which saw audience members given the opportunity to display their talent to win Palmerston Youth Festival Merch.

To supplement these acts, intermission included a drumming, fire show dancing extravaganza to further entertain the crowd and contestants. Judging of the talent quest was undertaken by Councillors Everleigh and Henderson as well as Community General Manager, Konrad Seidl. Judges had an extraordinarily difficult decision to make determining winners, ultimately settling on three (3) place winners and three (3) highly commended awards. The event crescendo was a group performance including all contestants of ACDC's *It's a long way to the top*. Participants and their parents had overflowing positive feedback on the night, extremely happy with the event overall and their experience. To increase accessibility to young people CDC offered two (2) free shuttles to the Palmerston Bus interchange at 8pm and 9pm to ensure everyone interested could attend.

A Place for People



Palmy's Got Talent crowd



Drumming performance



Basketball shoot out



All 2024 performers

Pamper Palmy 11 July 2024, Palmerston Recreation Centre

Over the three (3) hour course of the event we had 280 people attend, 200 of which arrived in the first 45 minutes.

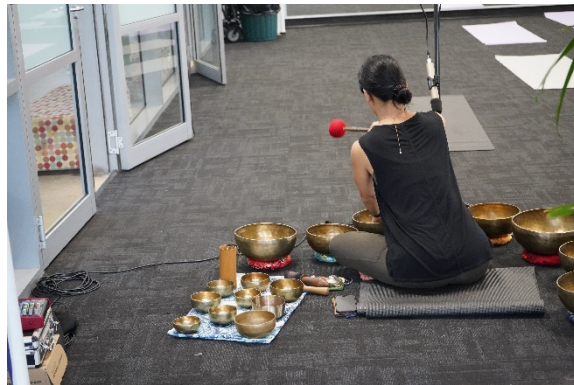
Attendees experienced a luxurious high tea with cakes and speciality drinks on arrival before having the opportunity to engage with six (6) local support and service providers targeted towards the needs of young people. This included Catholic Care Drug and Alcohol services, Amity discussing Gaming and Addiction, Clinic 34 Sexual Health, The Office of Youth Affairs, and Team Health discussing mental health and wellbeing. Attendees got to enjoy free haircuts, manicures, massages, henna tattoos, clay play, and ice baths for recovery and meditation. There were also a series of selfcare workshops including introduction to yoga, meditation, and drumming for therapy. The pre-register workshop for Clay Earing Making sold out in four (4) days and had 24 people on the waiting list.

This event was the first of its kind, with the purpose to increase the diversity and variety of interests catered to at the Palmerston Youth Festival. It has been considered by all a great success, and likely to return in the 2025 schedule.

A Place for People



Clay earring workshop



Sound healing



Ice bath and coaching



High tea

Wrap Up Party 12 July, Palmerston Recreation Centre

The Wrap Up Party aimed to create a safe, inclusive space for youth to celebrate the end of the Palmerston Youth Festival with local and national DJs/artists. Formerly Suburban Sounds, it was rebranded as the Palmerston Youth Festival – Wrap Up Party. Held at Palmerston Recreation Centre for the first time, the event was strategically aligned with Palmerston Markets to maximise attendance.

The show opened with Ethan, the winner of the Performance Mentorship 2024, who worked with Caiti Baker from Sietta Creative to prepare for the Wrap Up Party. The lineup included Psych3 Dance Crew, winners of the K-Festival 2024, who impressed the crowd with their hip-hop dance moves in two (2) back-to-back performances. Next, we welcomed Yung Milla, an emerging rapper with a growing local fan base, to the stage. He was well-received by the crowd and engaged effectively with the youth and the attendees. CAM.DEN, an artist from Perth who headlined the main stage at the prestigious Seasons Festival, followed showcasing his talent on the guitar accompanied by background tracks.

Mastered, an artist and DJ from Melbourne with tracks released by top European labels like Up All Night Berlin, Storm Music, Soave Records, and Loudkult, then took the stage, performing groovy beats that got the audience dancing. Simon Sez, who was taught by CYRIL and has played at the Electric Storm Festival, Discovery, and Mayberry, set the stage for our headliner. He has supported artists such as Will Sparks and Tigerlily.

Our headliner, CYRIL, an Aussie-born artist known for "Stumblin' In" and his remix of Disturbed's "Sound of Silence," delivered an outstanding performance. Born and raised in regional Australia and now based in Palmerston, CYRIL is a producer, DJ, and multi-instrumentalist, playing guitar, piano, and drums. His journey has been challenging, but his unwavering passion for music shone through, keeping the audience

on their feet and grooving to his beats. This was the highly anticipated finale everyone had been looking forward to at the Palmerston Youth Festival. The audience was thrilled to watch CYRIL's performance.

Additionally, we had face painting and a bucking bull on Frances Drive, with lines of kids and adults eager to participate in the activities. The event welcomed over 1,500 attendees throughout the evening, although the number of people within the venue was limited at any given time. Overall, the Wrap Up Party was considered a successful conclusion to the Palmerston Youth Festival 2024.



Psych3 after their performance



Bucking Bull on Frances Drive



Yung Milla engaging with the crowd



CYRIL and audience

Competitions

PYF funding of \$25,000 was allocated towards diverse competitions and prizes to provide a range of opportunities for young people to showcase their skills and expertise across various fields. The prizes awarded to winners not only recognise their talents but also provide them with opportunities to further hone their skills and pursue their passions. The competitions included:

- Cosplay
- Ultimate Smash Bros
- Just Dance
- Purple Brick Road
- Video Game Development
- Raffles
- 3x3 Football
- Trivia and Bingo
- Talent Show
- Performance Mentorship

CONSULTATION AND MARKETING

Marketing and Communications campaign

The 2024 Palmerston Youth Festival campaign was a comprehensive, focused on brand recognition, and promotion of individual events and major events. The campaign began in May 2024. There was a large focus on the digital aspects, directly targeting the youth demographic. The total marketing expenditure was just under \$50,000.

This year a dedicated Facebook and Instagram channel was created, *@PalmerstonYouthFestival*, the hub of all communication regarding the festival, utilising both organic and paid options. KPI's were set to increase both channels' followers by 5% from when it transitioned from YoPalmy to Palmerston Youth Festival, these were surpassed with Instagram increasing followers by 5.2% (923) and Facebook by 16.9% (2,940).

The following tools and tactics were taken to increase awareness and engagement of the Palmerston Youth Festival:

- Videos featuring headline act CYRIL (6, 15 and 30 seconds) focusing on the overall festival, Geekfest Top End and the Wrap Up Party published on Tik Tok, YouTube and in-app gaming
- TVC on Channel Nine with headline act CYRIL
- Social media on dedicated channel both organic and paid posts:
 - Facebook organic posts from May – July organic posts: 34
 - Instagram organic posts from May – July organic posts: 20
 - Paid advertising: 16 ads totalling 133,742 reach and 426,878 impressions
- NT News campaign in June – July.
 - Impressions: 85,390 | Total clicks 55
 - Six (6) x digital placements
 - One (1) x print
 - Two (2) x sponsored content (article and Facebook feature)
- Radio placements: 111 ads from June – July.
- Radio Competition Black Betty with Tentacle Mike give away
- Out of House marketing:
 - Internal bus displays: 42 displays
 - Digital billboards: three (3) displays in six (6) locations
 - Flagpole banners: 11 in Palmerston CBD
 - Highway banners: on Stuart Highway and then to Civic Plaza car park
 - Teardrop banners: four (4) x four (4)m banners
 - Fence wrap - Geekfest Top End branded
- Palmerston Youth Festival booklet - 5000 printed
- Website - City of Palmerston Youth Festival website visits May – July 2024: 9,372 visits
- Eventbrite: seven (7) events.

Overall, the marketing campaign was successful and had multiple reach and engagement across channels.

POLICY IMPLICATIONS

There are no policy implications for this Report.

BUDGET AND RESOURCE IMPLICATIONS

Under the funding agreement, the Northern Territory Government grant contribution is \$300,000 per year with City of Palmerston contributing an additional \$50,000 per year. The 2024 budget has been expended and an acquittal is being prepared, to be presented to the Northern Territory Government in November 2024.

A Place for People

City of Palmerston have ensured all funding requirements have been met, including allocating up to \$25,000 for competitions and prizes.

City of Palmerston staff led the management and planning of the event over several months.

RISK, LEGAL AND LEGISLATIVE IMPLICATIONS

Failure to work in partnership with the NTG as the key stakeholder.

Failure to meet the contract funding requirements and special conditions, may result in withdrawal of funding.

Mitigated risk by consulting with NTG stakeholders throughout the festival planning processes, and key updates are provided to NTG throughout

This Report addresses the following City of Palmerston Strategic Risks:

- 1. Community Safety**

Failure of Council to effectively plan and deliver its role in community safety.

STRATEGIES, FRAMEWORK AND PLANS IMPLICATIONS

This Report relates to the following City of Palmerston Strategies, Framework and Plans:

- [Inclusive, Diverse & Accessible Policy Framework](#)

COUNCIL OFFICER CONFLICT OF INTEREST DECLARATION

We the author and approving officer declare that we do not have a conflict of interest in relation to this matter.

ATTACHMENTS

Nil



A Place for People

9 INFORMATION AND CORRESPONDENCE

9.1 Information

9.2 Correspondence

10 GENERAL BUSINESS

11 NEXT COMMITTEE MEETING

THAT the next Community Wellbeing Advisory Committee Meeting of Council be held on Thursday, 05 December 2024 at 5:30pm in the Council Chambers, Civic Plaza, 1 Chung Wah Terrace, Palmerston.

12 CLOSURE OF MEETING



MINUTES

Community Wellbeing Advisory Committee Meeting

Thursday 13 June 2024

The Advisory Committee Meeting of the City of Palmerston held in the Council Chambers, Civic Plaza, 1 Chung Wah Terrace, Palmerston, NT 0830

Council business papers can be viewed on the City of Palmerston website www.palmerston.nt.gov.au

UNCONFIRMED

'A Place for People'



A Place for People

COMMITTEE MINUTES

Minutes of Community Wellbeing Advisory Committee Meeting
held in Council Chambers
Civic Plaza, 1 Chung Wah Terrace, Palmerston
on Thursday, 13 June 2024 at 5:30pm.

PRESENT

COMMITTEE MEMBERS	Councillor Sarah Henderson (Chair) Mayor Athina Pascoe-Bell Sheryl Sephton, Senior Community Member Senior Sergeant Siiri-Kai Tennosaar, Northern Territory Representative
STAFF	Acting Chief Executive Officer, Amelia Vellar General Manager Community, Konrad Seidl Regulatory Services Manager, Angie Heriot Minute Secretary, Georgina Davies
GALLERY	Nil

Initials:

MINUTES COMMUNITY WELLBEING ADVISORY COMMITTEE MEETING - 13 JUNE 2024

34



A Place for People

COMMITTEE MINUTES

1 ACKNOWLEDGEMENT OF COUNTRY

City of Palmerston acknowledges the Larrakia people as the Traditional Custodians of the Palmerston region. We pay our respects to the Elders past, present and future leaders and extend that respect to all Aboriginal and Torres Strait Islander people.

2 OPENING OF MEETING

The Chair declared the meeting open at 5:35pm.

3 APOLOGIES AND LEAVE OF ABSENCE

3.1 Apologies

Moved: Mayor Pascoe-Bell
Seconded: Sheryl Sephton

1. THAT the apology received from Veronica Matipira for 13 June 2024 be received and noted.
2. THAT the apology received from Michelle Walker for 13 June 2024 be received and noted.

CARRIED CWAC10/54 – 13/06/2024

3.2 Leave of Absence Previously Granted

Nil

3.3 Leave of Absence Request

Nil

4 DECLARATION OF INTEREST

4.1 Committee Members

Nil

4.2 Staff

Nil

5 CONFIRMATION OF MINUTES

5.1 Confirmation of Minutes

Moved: Sheryl Sephton
Seconded: Siiri Tennosaar

THAT the Minutes of the Community Wellbeing Advisory Committee Meeting held on Wednesday 27 March 2024 pages 29 to 33 be confirmed.

CARRIED CWAC10/55 – 13/06/2024

Initials: _____

MINUTES COMMUNITY WELLBEING ADVISORY COMMITTEE MEETING - 13 JUNE 2024

35



A Place for People

COMMITTEE MINUTES

5.2 Business Arising from Previous Meeting

Nil

6 DEPUTATIONS AND PRESENTATIONS

Nil

7 CONFIDENTIAL ITEMS

7.1 Moving Confidential Items into Open

Nil

7.2 Moving Open Items into Confidential

Nil

7.3 Confidential Items

Nil

8 OFFICER REPORTS

8.1 Action Reports

Nil

8.2 Receive and Note Reports

8.2.1 Network Updates - Community Wellbeing Committee

Moved: Mayor Pascoe-Bell

Seconded: Siiri Tennaasar

THAT Report entitled Network Updates - Community Wellbeing Committee be received and noted.

CARRIED CWAC10/56 - 13/06/2024

8.2.2 Community Facility Use

Moved: Sheryl Sephton

Seconded: Mayor Pascoe-Bell

THAT Report entitled Community Facility Use be received and noted.

CARRIED CWAC10/57 - 13/06/2024

Initials: _____



A Place for People

COMMITTEE MINUTES

8.2.3 Community Events Update

Moved: Sheryl Sephton
Seconded: Mayor Pascoe-Bell

THAT Report entitled Community Events Update be received and noted.

CARRIED CWAC10/58 - 13/06/2024

8.2.4 Library Wellbeing Events and Programs

Moved: Siiri Tennesaar
Seconded: Sheryl Sephton

THAT Report entitled Library Wellbeing Events and Programs be received and noted.

CARRIED CWAC10/59 - 13/06/2024

8.2.5 Community Development Update

Moved: Sheryl Sephton
Seconded: Siiri Tennesaar

THAT Report entitled Community Development Update be received and noted.

CARRIED CWAC10/60 - 13/06/2024

8.2.6 Animal Management Update

Moved: Mayor Pascoe-Bell
Seconded: Sheryl Sephton

THAT Report entitled Animal Management Update be received and noted.

CARRIED CWAC10/61 - 13/06/2024

9 INFORMATION AND CORRESPONDENCE

9.1 Information

Nil

9.2 Correspondence

Nil

Initials: _____



A Place for People

COMMITTEE MINUTES

10 GENERAL BUSINESS

17.1 Tom Price Park

Moved: Sheryl Sephton
Seconded: Siiri Tennosaar

THAT the question asked by Sheryl Sephton on the replacement of Tom Price Park following recent damage and the potential for lighting upgrade be taken on notice by the Acting Chief Executive Officer.

CARRIED CWAC10/62 – 13/06/2024

11 NEXT COMMITTEE MEETING

Moved: Sheryl Sephton
Seconded: Siiri Tennosaar

THAT the next Community Wellbeing Advisory Committee Meeting of Council be held on Thursday, 12 September 2024 at 5:30pm in the Council Chambers, Civic Plaza, 1 Chung Wah Terrace, Palmerston.

CARRIED CWAC10/63 – 13/06/2024

12 CLOSURE OF MEETING

Moved: Mayor Pascoe-Bell
Seconded: Siiri Tennosaar

THAT the meeting of the Community Wellbeing Advisory Committee held in Council Chambers, Civic Plaza, Palmerston on 13 June 2024 closed at 6:20pm.

CARRIED CWAC10/64 – 13/06/2024

The Chair declared the meeting closed at 6:20pm.

Chair

Print Name

Date

Initials: _____