

AGENDA

Community Safety Advisory Committee Meeting

Tuesday 13 August 2024

The Advisory Committee Meeting of the City of Palmerston will be held in the Council Chambers, Civic Plaza, 1 Chung Wah Terrace, Palmerston, NT 0830 commencing at 5:30 PM.

Advisory Committee business papers can be viewed on the City of Palmerston website www.palmerston.nt.gov.au or at the Council Office located: Civic Plaza, 1 Chung Wah Terrace, Palmerston NT 0830.



LUCCIO CERCARELLI
CHIEF EXECUTIVE OFFICER



A Place for People

TABLE OF CONTENT

- 1 ACKNOWLEDGEMENT OF COUNTRY4
- 2 OPENING OF MEETING4
- 3 APOLOGIES AND LEAVE OF ABSENCE.....4
 - 3.1 Apologies.....4
 - 3.2 Leave of Absence Previously Granted4
 - 3.3 Leave of Absence Request.....4
- 4 DECLARATION OF INTEREST4
 - 4.1 Committee Members4
 - 4.2 Staff4
- 5 CONFIRMATION OF MINUTES.....4
 - 5.1 Confirmation of Minutes.....4
 - 5.2 Business Arising from Previous Meeting.....4
- 6 DEPUTATIONS AND PRESENTATIONS.....4
 - 6.1 Developing Community Safety Through a Generation.....4
- 7 CONFIDENTIAL ITEMS4
 - 7.1 Moving Confidential Items into Open.....4
 - 7.2 Moving Open Items into Confidential.....4
 - 7.3 Confidential Items.....4
- 8 OFFICER REPORTS4
 - 8.1 Action Reports5



A Place for People

- 8.2 Receive and Note Reports5
 - 8.2.1 Network Update5
 - 8.2.2 Laneway Management Policy - Consultation.....8
 - 8.2.3 Crime Prevention Through Environmental Design Outcomes Update32
- 9 INFORMATION AND CORRESPONDENCE35
 - 9.1 Information.....35
 - 9.2 Correspondence.....35
- 10 GENERAL BUSINESS35
- 11 NEXT COMMITTEE MEETING.....35
- 12 CLOSURE OF MEETING35

A Place for People

1 ACKNOWLEDGEMENT OF COUNTRY

2 OPENING OF MEETING

3 APOLOGIES AND LEAVE OF ABSENCE

3.1 Apologies

3.2 Leave of Absence Previously Granted

3.3 Leave of Absence Request

4 DECLARATION OF INTEREST

4.1 Committee Members

4.2 Staff

5 CONFIRMATION OF MINUTES

5.1 Confirmation of Minutes

THAT the Minutes of the Community Safety Advisory Committee Meeting held on 14 May 2024 pages 28 to 31 be confirmed.

5.2 Business Arising from Previous Meeting

6 DEPUTATIONS AND PRESENTATIONS

6.1 Developing Community Safety Through a Generation

THAT the presentation by Jonathon McDonald, Manager, The YNT and Renee Berry, Senior Programs Officer, Territory Families, Housing and Communities on Developing Community Safety Through a Generation be received and noted.

7 CONFIDENTIAL ITEMS

7.1 Moving Confidential Items into Open

7.2 Moving Open Items into Confidential

7.3 Confidential Items

Nil

8 OFFICER REPORTS

COMMITTEE REPORT

Committee Meeting

AGENDA ITEM:	8.2.1
REPORT TITLE:	Network Update
MEETING DATE:	Tuesday 13 August 2024
AUTHOR:	Community Development Officer, Kate Townsend
APPROVER:	General Manager Community, Konrad Seidl

COMMUNITY PLAN

Family and Community: Palmerston is a safe and family friendly community where everyone belongs.

PURPOSE

This Report seeks to provide the Community Safety Advisory Committee with a Palmerston Safe Communities Network update.

KEY MESSAGES

- The third Palmerston Safe Communities Network (PSCN) Meeting for 2024 was held on 1 August 2024 at the Palmerston Library Community Room.
- This meeting included a guest presentation from Amity regarding Volatile Substance Use. Primary discussions from members were based on homelessness, domestic violence and road safety.

RECOMMENDATION

THAT Report entitled Network Update be received and noted.

BACKGROUND

The Community Safety Network Charter adopted by Council has six (6) objectives as follows:

- Contribute to the research, development, and implementation of relevant Council strategies, plans and by-laws.
- Establish effective partnerships with key stakeholders engaged in injury and crime prevention in Palmerston.
- Ensure access to information, specialist advice and support from PSCN partners relating to injury prevention and safety issues.
- Inform, lobbying and influencing relevant key organisations to improve levels of safety in Palmerston.
- Prioritising injury and safety issues for Palmerston and consider campaigns, injury prevention and safety promotion programs and projects in response to local needs and issues.
- Participate in event planning, consultation processes, and other forms of engagement relating to relevant issues.

DISCUSSION

The most recent meeting of the PSCN occurred on Thursday, 1 August 2024 at Palmerston Library Community Room with attendees from a cross-section of service providers, Northern Territory Government Departments and Councillor Henderson as Chair.

A Place for People

This meeting included a guest presentation from Amity Community Services on Volatile Substance Use (VSU), an issue that has gained considerable attention during network meetings this year from service providers, local businesses and government departments. Amity's presentation included critical information on how to care for individuals under the influence of volatile substances such as discouraging physical activity or exertion. Contact details were provided for key reporting bodies which can provide targeted services, support, and outreach for those engaging in volatile substance use. Amity is available to deliver presentations on VSU to organisations or groups free of charge.

Following the VSU presentation, those present provided member updates. Members shared information regarding their organisations and identified possible collaborative opportunities.

Discussion focused predominately on increased visitors from neighbouring communities relating to the recent Darwin Show, as well as those seeking alcohol, due to limited availability in their home community. Visitor numbers may be placing additional strain on public housing overcrowding, as well as crisis response providers. Services and support are being directed to identified hot spots, connecting individuals to return to country services, health, and education where children are present. Where a place of origin can be determined, Community Elders and the Northern Land Council are being engaged to help repatriate residents.

Attention was given on identifying most appropriate reporting bodies for common issues raised in the Network Meetings:

- Volatile Substance Team (AOD) vsa.tehs@nt.gov.au
- Broken glass and bottles in Palmerston parks and paths – report directly to City of Palmerston through the App, or via phone.
- To report anti-social behaviour hot spots: Territory Community Safety Coordination Centre (email only) tcsc@pfes.nt.gov.au
- Other issues can be reported to Sarah Gotch at the Department of Chief Minister and Cabinet sarah.gotch@nt.gov.au
- Pedestrian Safety, risks or threats contact 000.

CONSULTATION AND MARKETING

There was no consultation or marketing required during the preparation of this Report.

POLICY IMPLICATIONS

There are no policy implications for this Report.

BUDGET AND RESOURCE IMPLICATIONS

There are no budget or resource implications relating to this Report.

RISK, LEGAL AND LEGISLATIVE IMPLICATIONS

This Report addresses the following City of Palmerston Strategic Risks:

1. **Community Safety**
Failure of Council to effectively plan and deliver its role in community safety.

STRATEGIES, FRAMEWORK AND PLANS IMPLICATIONS

This report relates to the Inclusive, Diverse & Accessible Policy Framework due to Council's engagement with the community to bring people together with diverse perspectives that increase the inclusiveness, diversity and accessibility of culture, services and operations.



A Place for People

COUNCIL OFFICER CONFLICT OF INTEREST DECLARATION

We the author and approving officer declare that we do not have a conflict of interest in relation to this matter.

ATTACHMENTS

Nil

COMMITTEE REPORT

Committee Meeting

AGENDA ITEM:	8.2.2
REPORT TITLE:	Laneway Management Policy - Consultation
MEETING DATE:	Tuesday 13 August 2024
AUTHOR:	Civil Operations Team Leader, Nickolas Rakkas
APPROVER:	General Manager of Infrastructure, Nadine Nilon

COMMUNITY PLAN

Future Focused: Palmerston is an innovative city that sustains itself through the challenges of the future.

PURPOSE

This Report presents to the revised draft Laneway Management Policy (Policy) to the Safety Advisory Committee for its engagement and feedback.

KEY MESSAGES

- The Laneway Management Policy was first adopted in November 2020 and is due for review.
- The Policy aims to preserve municipal laneways and guide decisions on their treatment or closure, ensuring a consistent, evidence-based approach.
- The review of the Policy, and subsequent application process has been extensive and provides an updated framework for the management of Council owned laneways and methods for evaluating laneways that is consistent and transparent in accordance with Council's obligations
- The most significant changes to the policy are the introduction of;
 - consideration of all treatments potentially applicable to a laneway, including amending existing closures, night-time only closure and permanent closure, and
 - a tiered approach for treatment assessment based on laneway category, enabling a more efficient process for some laneways.
- The application of the laneway categories, based on impact of active transport routes (ie additional distance a person needs to walk/cycle), has also been calculated for all laneways, enabling residents to be easily informed of the category and process for potential closure/treatment if requested.
- Consultation of the revised policy included writing to landowners' adjacent laneways and physical signage on Essential laneways.
- Public consultation of the revised policy commenced on 3 July and ended on 31 July.
- The public feedback received will be collated and presented to Council for consideration in preparation for the adoption of the revised policy.
- Feedback received from the City of Palmerston Community Safety and Wellbeing Advisory Committees will also be considered and incorporated into the final draft to be presented to Council.
- The final draft is anticipated to be presented to Council by October 2024.

RECOMMENDATION

1. THAT Report entitled Laneway Management Policy - Consultation be received and noted.
2. THAT the Committee provides the following feedback to the Council regarding the draft Laneway Management Policy:
 - a. *Insert Feedback comments (i.e. The committee supports the draft policy).*

BACKGROUND

Council adopted its first Laneway Management Policy in November 2020. The purpose of the Policy is to preserve the network of laneways within the municipality and to guide the decision-making process when considering a form of treatment or closure. The Policy is aimed at ensuring a consistent, evidence-based approach to laneways management and treatments, particularly in relation to public requests for closures.

<https://palmerston.nt.gov.au/community/community-safety/lanewaymanagement>

Council requested at the 2nd Ordinary Council Meeting held on 16 May 2023, that the Laneway Management Policy was reviewed ahead of its initial schedule of late 2024.

Laneway Closure Request – Broadarrow Circuit Woodroffe

Moved: Deputy Mayor Morrison

Seconded: Councillor Garden

1. THAT Report entitled *Laneway Closure Request – Broadarrow Circuit Woodroffe* be received and noted.
2. THAT following consideration of the *Broadarrow Circuit Laneway Request* received 9 January 2023, that the laneway remains open at this time, with a further review and report to Council at the Second Ordinary Meeting in November 2023.
3. THAT a review of the Laneway Management Policy be brought forward to occur by the Second Ordinary Meeting in November 2023.

CARRIED 10/839 – 16/05/2023

At the 1st Ordinary Council Meeting of December 2023 Council made the following decisions:

13.1.7 Laneway Treatment and Laneway Management Policy Review

Moved: Deputy Mayor Eveleigh

Seconded: Councillor Henderson

1. THAT Report entitled *Laneway Treatment and Laneway Management Policy Review* be received and noted.
2. THAT Council endorse the following key elements to be included in the *Laneway Management Policy* review, with a draft to be presented to Council by March 2024.
 - a. Consideration of a tiered closure process based on laneway categorisation.
 - b. Night-time closures as an option to be incorporated as part of the application and assessment process.
 - c. Process and timing for amending existing and potential future treatments of laneways that are not permanently closed.
 - d. Reconsideration of annual review process for laneways with existing treatments.
3. THAT Council approve the continuation of the existing twelve temporary part-time laneway closures and seven full-time closures for a further twelve-month period, with a report to be prepared for Council by December 2024 for review, or as required following the updating of the *Laneway Management Policy*,

CARRIED 10/1138 – 12/12/2023

At the 2nd Ordinary Council Meeting of March 2023 Council made the following decisions:

13.1.3 Draft Laneway Management Policy

Moved: Councillor Fraser
Seconded: Councillor Eveleigh

1. THAT Report entitled Draft Laneway Management Policy be received and noted.
2. THAT a Council workshop be held by end May 2024 to review the draft Laneway Management Policy.

CARRIED 10/1252 – 19/03/2024

Following a Council workshop, feedback from Councillors has been incorporated into the draft Policy and relevant flowcharts.

This report presents the revised draft Laneway Management Policy to the Safety Advisory Committee as part of the consultation process.

DISCUSSION

The Laneway Management Policy has been in effect since November 2020, refer to attached **Attachment 8.2.2.1**.

A review of the Policy has been undertaken to improve alignment with Council's position on laneway matters, improve efficiency and community outcomes. Changes to the Policy provide additional flexibility to community requests regarding treatments and transparency of the categorisation of each laneway.

The revised Policy being recommended for endorsement for consultation is provided at **Attachment 8.2.2.2**. A tracked changes version is not provided due to the number of changes to the Policy.

Some key highlights of changes incorporated into the revised Policy are:

- Tiered Laneway Treatment process, linked to Laneway Categorisation, which is related to active transport movement, noting the categorisation calculation has not changed, however the names of the categories have been updated;
 - Low – Non-essential
 - Medium – Less essential
 - High – Essential
- Laneways with existing treatments will continue indefinitely once applied, or until a relevant application for an amendment is received.
- Amendments to treatments can be requested through a Laneway Application.

The changes to the Policy comprise of lessons learnt since the implementation of current Policy and discussions at Council workshops.

Tiered Laneway Treatment Process

A tiered framework linked to laneway transport category provides transparency on Councils position with each category and clarity on the process which determines a proposed treatment. The approach improves Councils decision-making ability when considering laneway treatments and tailors the community engagement to improve the identification of community impacts of a proposed treatment

A laneway categorisation has been completed for all council laneways, classifying them into one (1) of three (3) categories, based on their active transport impact. This is the calculation of the impact of additional distances to travel to different points of interest, such as schools and shops, and is consistent with the previous categorisation calculation.

The Transport category for all laneways is included at **Attachment 8.2.2.3**, and will be available for the public to access. Laneway applications will be reviewed in line with their category and predetermined process (refer to flow charts).

A Laneway Policy Flow Chart for each laneway category was created to visually guide residents through the application process and to outline the process council will follow on receiving a submission. The flowcharts will be available publicly for use alongside an application.

- Essential Laneway Flowchart **Attachment 8.2.2.4**,
- Less Essential Flowchart **Attachment 8.2.2.5**
- Non-Essential flowchart **Attachment 8.2.2.6**

Additional Treatment Options in Application

The revised Policy now includes provisions for reactivating temporarily closed laneways and proposing new treatments, including nighttime closures. It enhances the decision-making process for laneway treatment and the removal of permanent closure requests.

Treatment Review Period

The reviewed Policy proposes that laneway treatments applied will continue indefinitely, with a review of current treatments be presented to council each council term to ensure alignment with current municipal strategies. This approach reduces the administrative requirement to seek annual Council approval to extend existing endorsed laneway treatments already endorsed by council.

Fees

The current fee associated with the permanent closure of a Laneway has been amended within the revised policy and is now linked to the City of Palmerston fees and charges rather than being listed within the Policy. The fee will only apply to the permanent closure of a laneway when amalgamated and will be included in the fees and charges booklet following finalisation of the updated Policy.

Next Steps

The active consultation period was live for 28 days with the period ending on 31 July 2024. Following this period, the consultation outcomes will be collated into a report and presented to Council in October 2024. This will include the outcomes of engagement with Council's Community Safety and Wellbeing Advisory Committees.

CONSULTATION AND MARKETING

Completed community engagement:

- Comprehensive information made available on the website including previous laneway consultation reports
- Supporting documents that help community understand the updates
- Opportunity to provide feedback via online, in person, email or over the phone for an extended period of 28 days (normally 21 days)
- Letters directly to impacted stakeholders (residents immediately adjacent a laneway)
- Signage with consultation details on all 'essential category' laneways
- Information made available via social media platforms
- NT Newsprint ad.

Engagement outcomes will be collated into a final report and presentation to Council in October 2024, this will include feedback received from Council's Community Safety and Wellbeing Advisory Committees.

The following City of Palmerston staff were consulted in preparing this Report:

- Marketing and Communications Manager

POLICY IMPLICATIONS

When adopted, the revised Council Laneway Management Policy will replace the current policy.

BUDGET AND RESOURCE IMPLICATIONS

When the revised Laneway Management Policy is endorsed by Council, the City of Palmerston fees and charges will be revised to reflect the cost changes.

RISK, LEGAL AND LEGISLATIVE IMPLICATIONS

This report addresses the following City of Palmerston Strategic Risks:

1. **Community Safety**
Failure of Council to effectively plan and deliver its role in community safety.
7. **Environmental Sustainability**
Failure of Council to clearly articulate, plan for and deliver prudent and responsible environmental ambitions.

The revised Policy outlines the purposes of preserving the network of laneways within the City and guides decisions to ensure vital functions of laneways are considered when assessing treatment options. The revised Policy is aimed at ensuring a consistent, evidence-based approach to laneway management and treatments, particularly in relation to public requests for closures.

STRATEGIES, FRAMEWORK AND PLANS IMPLICATIONS

The Community Infrastructure Plan, Inclusive, Diverse and Assessable Policy Framework and the Disability Inclusion and Access Plan have been considered in the development of the revised Laneway Management Policy.

COUNCIL OFFICER CONFLICT OF INTEREST DECLARATION

We the author and approving officer declare that we do not have a conflict of interest in relation to this matter.

ATTACHMENTS

1. Council Policy Laneway Management Original [8.2.2.1 - 6 pages]
2. Revised Laneway Management Policy [8.2.2.2 - 6 pages]
3. Laneway Transport Category [8.2.2.3 - 4 pages]
4. Laneway Policy Flowchart DRAFT NR 20240207 - Essential [8.2.2.4 - 1 page]
5. Laneway Policy Flowchart DRAFT NR 20240207 - Less- Essential [8.2.2.5 - 1 page]
6. Laneway Policy Flowchart DRAFT NR 20240207 - Non- Essential [8.2.2.6 - 1 page]



POLICY

Name:	Laneway Management Policy		
Type:	Council Policy		
Owner:	Chief Executive Officer		
Responsible Officer:	Director City Growth and Operations		
Approval Date:	17/11/2020	Next Review Date:	17/11/2024
Records Number:	435343	Council Decision:	9/1385

1 PURPOSE

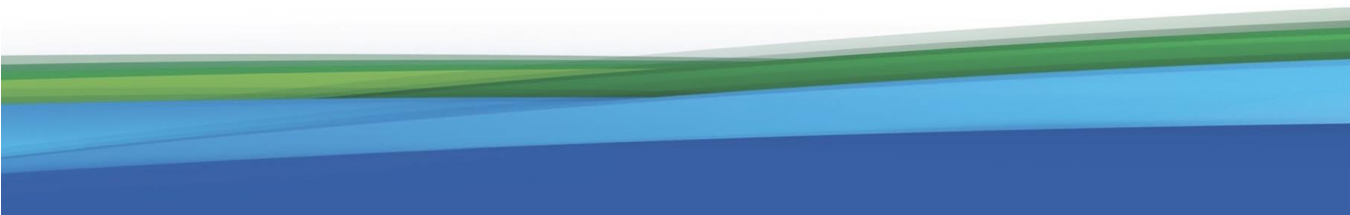
The purpose of this policy is to:

- preserve the network of laneways within the City, and
- guide decision making where a request to implement some form of treatment or closure of a laneway is received.

2 PRINCIPLES

The principles that apply to the management of laneways are:

- Council recognises the purpose and function that laneways were created and where practicable will retain laneways as a component of the pathway network
- Council will advocate for the engagement of all relevant government agencies that may impact on social behaviour issues and influence community responses and views
- The occurrence of anti-social and criminal behaviour is a community issue that may not be practical to address by laneway treatments or closures
- The implementation of temporary laneway treatments should not exceed twelve months without being reviewed by Council to assess effectiveness and costs
- A laneway that provides an overland stormwater flow path will not be considered for permanent closure
- Council recognizes that community expectations over time may change and that there will be different views within the community at any one time
- Wherever possible Council will seek to respond to the broad interests of the community when determining any treatment or closure of a laneway
- The permanent closure of a laneway within the road reserve requires the consent of the Minister for Local Government and the Minister responsible for the Control of Roads Act



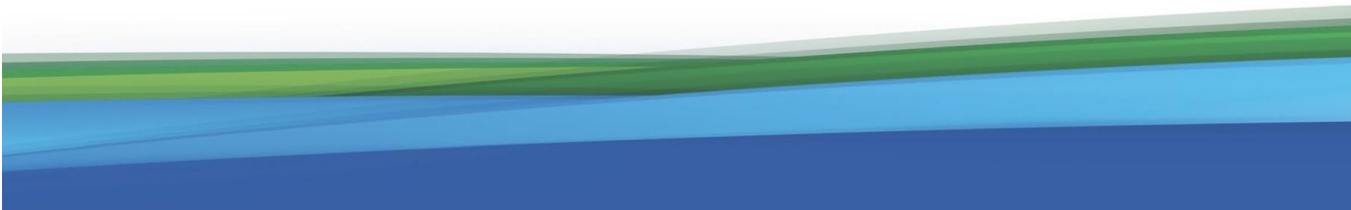


POLICY

3 DEFINITIONS

For the purposes of this Policy, the following definitions apply:

Term	Definition
Public Open Space (POS) Access Laneway	A laneway connecting a street to POS, and the land comprising the laneway is within the surveyed lot forming the POS
Street Access Laneway	A laneway connecting two streets and the land is a continuation of the road reserve
Laneway Category	A method to calculate the significance of the laneway based on the level of disruption to active transport activities and overland stormwater movement
Permanent Laneway Treatment	A modification of a laneway intended to remain in place for greater than twelve months that may include: <ul style="list-style-type: none"> • Bicycle chicane/s, • Lighting. Permanent closure is not a form of laneway treatment.
Temporary Part Time Closure	Typically involves daily closing of a laneway with locked gates typically between the hours of 9:00pm and 6:30am with the duration of the daily closing as determined by Council with a maximum period of twelve months. The time of closure will be assessed to suit the circumstances of the laneway.
Temporary Full Time Closure	The closure of the laneway with locked gates with the duration of closure as determined by Council with a maximum period of twelve months.
Permanent Closure	The closing of a laneway by the creation of a new lot that is defined by the boundaries of the abutting properties with the intent to dispose of the lot and consolidate into abutting properties
Active Transport	Relates to physical activity undertaken as a means of transport. It includes travel by foot, bicycle, motorised scooters, and non-motorised vehicles.
Relevant Government Agencies	NT Police Force, Territory Housing, Territory Families, and other agencies involved with the provision of social services
Public Utility Easement (Linear or Transverse)	An easement established in the interest of a public utility provider for the purpose of protecting an underground service/s located within (linear) or across (transverse) a laneway
Overland Stormwater Flow Path	Several laneways provide severe rainfall (1:100 yr) event overland flow paths to mitigate the risk of property inundation





POLICY

4 POLICY STATEMENT

4.1 Rationale

4.1.1 The retention of laneways to enable active transport options is Council's preferred option.

4.1.2 Where social issues associated with anti-social or criminal activity are occurring within the vicinity of a laneway the initial response is to engage with relevant government agencies to identify reactive and proactive intervention options, prior to considering the use of laneway treatments.

4.1.3 The permanent closure of a laneway will be considered by Council in special circumstances where the closure of the laneway does not unreasonably impact on active transport options within the vicinity of the laneway. The impact assessment includes several information sources outlined in the Policy.

4.2 Laneway Application and Assessment Requirements

4.2.1 Landowner application to close a laneway
For Council to assess a laneway an application form must be completed by all abutting property owners. The form will include the following:

- a) Reason for requesting closure of the laneway e.g. anti-social behaviour associated with use of the laneway
- b) Details of incidents reported to NT Police providing dates and times
- c) Period of occupancy of the property
- d) Acknowledgment that a financial contribution will be paid to Council on request prior to instigation of a permanent closure where Council determines closure is possible
- e) Acknowledgement that payment to Council is required for the portion of the closed laneway that may be amalgamated with their property prior to undertaking the permanent closure following Ministerial consent for permanent closure (where required).

NOTE:

1. Where an abutting property owner is the Northern Territory Government, Council will liaise directly with the relevant agency.
2. Payment of a financial contribution will not be required at the time of requesting closure of a laneway – only after Council determines that permanent closure is possible.
3. Where a resident is not the owner of the property, the property owner is required to make the application as the property owner will be required to agree to amalgamate any closed portion of laneway and make a payment for the land based on the methodology set out in Clause 4.4.3.

4.2.2 Information to be collected for report to Council

4.2.2.1 Where the completed application forms have been received from all property owners, Council will undertake the following actions:

- a) Request information from NT Police relating to the vicinity of the laneway covering the most recent quarterly reporting period



POLICY

- b) Survey a minimum 20 properties within the immediate vicinity of the laneway
- c) Install a CCTV camera at one end of the laneway for a period of not less than three weeks to obtain laneway usage data
- d) Request information from relevant government agencies and non-government organisations on local issues
- e) Calculate the Laneway Category using the approved methodology
- f) Assess the laneway in respect of stormwater function
- g) Obtain information on underground services within the laneway.

NOTE:

1. Council will respond to a request for closure no later than three months from receipt of a written request submitted in accordance with Clause 4.2.1.

4.2.3 Consideration by Council

4.2.3.1 Where the above requirements and information have been completed Council will consider the appropriate action to be taken. The options that Council may consider are:

- a) Decline the request;
Where a request has been declined Council will not consider a further request within twelve months unless there is a demonstrable and significant change in circumstances from the original request.
- b) Request relevant government agencies and non-government organisations to provide responses to address the cause of the anti-social behaviour;
- c) Where the information indicates that a targeted strategy may assist in addressing the cause of the anti-social behaviour Council will advocate for responses from the relevant government agencies and non-government organisations.
- d) Consider a treatment commensurate with the identified issues;
- e) Where treatment does not involve trialling part-time closures, the treatment may be permanent. Where the Council approves the trialling of a part-time closure, the closures will occur for a maximum period of twelve months (from implementation).

NOTE:

1. Council will determine the review period based on the specific circumstances of the laneway. The purpose of setting a twelve month maximum period is to ensure that the information and monitoring that may be required is undertaken in a timely manner.

4.2.4 Review by Council

4.2.4.1 Where Council has approved a trial treatment or facilitated a response by relevant government agencies and non-government organisations the following review periods will apply:

- a) Request relevant government agencies and non-government organisations to provide responses to address the cause of the anti-social behaviour.



POLICY

4.2.4.2 Council will review the effectiveness of the responses no sooner than six months from implementation.

4.2.4.3 Where the responses have not achieved a positive outcome however the expectation is that the strategy/response may deliver reduced incidents of anti-social behaviour, the Council may defer a decision on the laneway for a further six month period.

4.2.4.4 At the conclusion of the initial six months or after twelve months where there is no demonstrable reduction in anti-social behaviour Council may consider permanent closure of the laneway subject to the required criteria being met.

- b) Consider a treatment commensurate with the identified issues;

Where the Council approves the trialling of a night-time closure, the closures will occur for a maximum period of twelve months (from implementation) before the effectiveness of the trial is assessed. During the trial the laneway use, and other relevant information will be collected.

4.2.4.5 Subject to the information collected, Council may choose to cease the treatment or extend the treatment for further period not exceeding twelve months.

4.3 Criteria for permanent closure of a laneway

4.3.1 Council may seek the permanent closure of a laneway where the following criteria are satisfied:

- a) The laneway does not provide an overland stormwater flow path; and
- b) The Laneway Category is rated a Low or Medium; and
- c) Agreement with abutting landowners ensures that the whole of the laneway will be disposed of through amalgamation with the abutting properties; and
- d) The abutting landowners have acknowledged and agreed to the contribution to costs for the closure of the laneway and the payment for the portion of closed laneway (inclusive of easements where applicable) to be amalgamated with their property; and
- e) The laneway use is less than 30 movements per day.

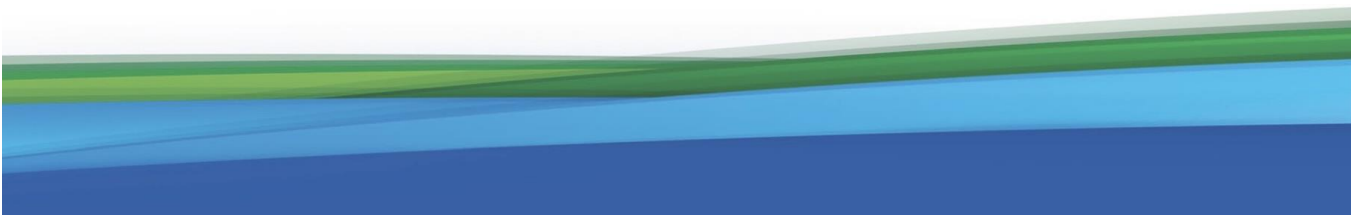
NOTE:

1. The purpose of the policy is to avoid the retention of small and isolated parcels of land held by Council that serve no long term benefit or purpose for the community.

4.4 Landowner contribution and purchase of land

4.4.1 The cost to undertake the permanent closure of a laneway may be up to \$16,000 and comprises public notices, survey, land titles and development costs, and removal of the constructed path.

4.4.2 Council will require each abutting landowner to contribute \$500 towards these costs. Payment will be required prior to instigating public consultation for the proposed closure.





POLICY

- 4.4.3 Where a landowner has agreed to amalgamate a portion of the closed laneway with their property, the value of the closed portion will be calculated as follows:
- The value of the original property will be determined,
 - The combined (original plus portion of laneway) property will be calculated,
 - The amount to be paid will be the difference between the two values.
- 4.4.4 The values will be determined by a Certified Practising Valuer and subject to review by the Valuer General where required.

NOTE:

1. Payment of a financial contribution will not be required at the time of requesting closure of a laneway – only after Council determines that permanent closure is possible.
2. Payment for a portion of land to be acquired will not be required at the time of requesting closure of a laneway – only after the permanent closure has been approved by the relevant Ministers, where required, and the subdivision of the land has been determined to enable the valuation methodology to be applied.

5 ASSOCIATED DOCUMENTS

- 5.1 City of Palmerston Laneway Classification Guidelines

6 REFERENCES AND RELATED LEGISLATION

- 6.1 *Local Government Act 2008*
6.2 *Local Government Act (Administration) Regulations 2008*
6.3 *Local Government Act (NT) 2008 Guidelines (Disposal of Property)*



POLICY

Name:	Laneway Management		
Type:	Council Policy		
Owner:	Chief Executive Officer		
Responsible Officer:	General Manager Infrastructure		
Adopted Date:	[Approval Date]	Next Review Date:	[Next Review]
Records Number:		Council Decision:	

1 PURPOSE

This Policy outlines the criteria for preserving the network of laneways within the City, and guides decision making where a request to implement or remove a form of treatment of a laneway is received.

2 PRINCIPLES

The principles that apply to the management of laneways are:

- Council recognises the purpose and function that laneways were created and where practicable, will retain laneways as a component of the pathway network.
- Council will act on Laneway Applications in line with the laneways given category.
- Council will advocate for the engagement of all relevant government agencies that may impact on social behaviour issues and influence community responses and views.
- The occurrence of anti-social and criminal behaviour is a community issue that may not be practical to address by laneway treatments or closures.
- A laneway that provides an overland stormwater flow path will not be considered for permanent closure.
- Council recognises that community expectations over time may change and that there will be different views within the community at any one time.
- Wherever possible Council will seek to respond to the broad interests of the community when determining any treatment or closure of a laneway.
- The permanent closure of a laneway within the road reserve requires the consent of the Minister for Local Government and the Minister responsible for the *Control of Roads Act*.

3 DEFINITIONS

For the purposes of this Policy, the following definitions apply:

Term	Definition
Active Transport	Relates to physical activity undertaken as a means of transport between points of interest. It includes travel by foot, bicycle, motorised scooters, and non-motorised vehicles.
Community	Public, residents, or rate payers
Fees and charges	Charges outlined in City of Palmerston's Fees and Charges.
Full Time Closure	The closure of the laneway with locked gates with the duration of closure as determined by Council. (Maximum of 12 months which will revert to open after this period)
Laneway	A laneway provides connectivity between roads and/or public open space. It could exist as road reserve or as part of a lot. It is typically less than 10m in width.



POLICY

Laneway Application	A request to implement or remove a form of treatment of a laneway.
Laneway Category (Transport Category)	A method to calculate the significance of the laneway for Active Transport based on the level of disruption to points of interest and desirable destinations.
Laneway Transport Category - Essential	High significance for active transport options.
Laneway Transport Category - Less Essential	Moderate significance for active transport options.
Laneway Transport Category - Non-Essential	Low significance for active transport options.
Overland Stormwater Flow Path	Where the laneway provides overland flow paths to mitigate the risk of property inundation in a major storm rainfall (1:100 yr) event.
Part Time Closure or Night Closure	Typically involves daily closing of a laneway with locked gates, typically between the hours of 9:00pm and 6:30am with the duration of the daily closing as determined by Council. The time of closure will be assessed to suit the circumstances of the laneway.
Permanent Closure	The closing of a laneway by the creation of a new lot that is defined by the boundaries of the abutting properties, with the intent to dispose of the lot and consolidate into abutting properties.
Public Utility Easement (Linear or Transverse)	An easement established in the interest of a public utility provider for the purpose of protecting an underground service/s located within (linear) or across (transverse) a laneway.
Relevant Government Agencies	NT Police Force, Territory Housing, Territory Families, and other agencies involved with the provision of social services.

4 POLICY STATEMENT

4.1 Rationale

- 4.1.1 The retention of laneways to enable active transport options is Council's preferred option.
- 4.1.2 Where social issues associated with anti-social or criminal activity are occurring within the vicinity of a laneway the initial response is to engage with relevant government agencies to identify reactive and proactive intervention options, prior to considering the use of laneway treatments.
- 4.1.3 The permanent closure of a laneway will be considered by Council in special circumstances where the closure of the laneway does not unreasonably impact on active transport options within the vicinity of the laneway. The impact assessment includes several information sources outlined in the Policy.



4.2 Laneway Application

4.2.1 For Council to consider treatment of a laneway, a Laneway Application form must be completed and submitted.

4.2.2 The form will include the following to be accepted by Council:

- a) All abutting property owners' signatures, with the acknowledgment of cost applied.
- b) Reasons for requesting the proposed treatment, with supporting documentation.
- c) Indication of the proposed laneway treatment, being temporary part time closure, temporary full-time closure, permanent closure, or laneway opening.
- d) Details of incidents reported to NT Police with dates, times, and promise/report numbers.
- e) Period of occupancy of the property owner.
- f) A non-refundable fee will be paid to Council once it determines the actions from the proposed Laneway Application in accordance with the Fees and Charges.
- g) Acknowledgement that payment to City of Palmerston is required for the portion of the closed laneway that may be amalgamated with their property prior to undertaking the permanent closure following Ministerial consent for permanent closure (where required).

4.2.3 The amendment of an existing laneway treatment will be considered by Council in the form of a Laneway application, the submission must contain or have attached relevant documents to support the proposed change in treatment or removal of treatment.

4.2.4 Where a request has been previously considered Council, a further application will not be considered for twelve months unless there is a demonstrable and significant change in circumstances from the original request.

NOTE:

- Council will respond to a Laneway request no later than three months from receipt of a conforming Laneway Application.
- The implementation of a treatment can take up to 12 months to apply.
- Where an abutting property owner is the Northern Territory Government, Council will liaise directly with the relevant agency.
- Where a resident is not the owner of the property, the property owner is required to make the application.



4.3 Laneway Assessment

Where a completed application for closure has been received, Council will undertake the following actions in line with the laneway Transport Category.

4.3.1 Essential

Laneways categorised as Essential are not automatically considered to meet the requirements for laneway treatment. Requests for treatment of Essential laneways will be presented to Council for consideration of treatment prior to community consultation or extensive data gathering.

Preliminary investigation

- a. Assess the laneway in respect of stormwater function.
- b. Obtain information on underground services within the laneway.
- c. Request information from NT Police relating to the vicinity of the laneway covering the most recent quarterly reporting period.
- d. Request information from relevant government agencies and non-government organisations on local issues.
- e. Report to Council to determine whether to proceed to detailed investigation.

Detailed Investigation

- a. Survey a minimum 20 properties within the immediate vicinity of the laneway
- b. Install a CCTV camera at one end of the laneway for a period of not less than three weeks to obtain laneway usage data.
- c. Report to Council.
- d. If treatment approved, relevant fee (if applicable) to be paid to Council in accordance with the City of Palmerston fees and charges.

4.3.2 Less Essential

Laneways with a category of Less Essential may meet the requirements for laneway treatment, subject to consultation and investigation.

Preliminary investigation

- a. 4-week localised consultation through signage at the Laneway to seek feedback from the community.
- b. Assess the laneway in respect of stormwater function.
- c. Obtain information on underground services within the laneway.
- d. Request information from NT Police relating to the vicinity of the laneway covering the most recent quarterly reporting period.
- e. Request information from relevant government agencies and non-government organisations on local issues.
- f. Report to Council whether to proceed to detailed investigation.

Detailed Investigation

- a. Install a CCTV camera at one end of the laneway for a period of not less than three weeks to obtain laneway usage data.
- b. Report to Council.
- c. If treatment approved, relevant fee (if applicable) to be paid to Council in accordance with the City of Palmerston fees and charges.



4.3.3 Non-Essential

Laneways with a category of non-essential are considered to have the highest potential for treatment to be applied.

- a. Assess the laneway in respect of stormwater function.
- b. Obtain information on underground services within the laneway.
- c. Request information from NT Police relating to the vicinity of the laneway covering the most recent quarterly reporting period.
- d. Request information from relevant government agencies and non-government organisations on local issue.
- e. Four-week localised consultation through signage at the Laneway to seek feedback from the community.
- f. Report to Council for decision.
- g. If treatment approved, relevant fee (if applicable) to be paid to Council in accordance with the City of Palmerston fees and charges.

4.4 Criteria for permanent closure of a laneway

Permanent closure of a Laneway will only be considered where all of the following criteria are satisfied:

- a. The Laneway does not provide an overland stormwater flow path.
- b. Agreement with abutting landowners ensures that the whole of the laneway will be disposed of through amalgamation with the abutting properties.
- c. The abutting landowners have acknowledged and agreed to the contribution to costs for the closure of the laneway and the payment for the portion of closed laneway (inclusive of easements where applicable) to be amalgamated with their property.
- d. The Laneway does not form part of an emergency access or escape.
- e. Service Authorities agree to the closure of the laneway with appropriate easements in place (where relevant).

NOTE: The purpose of the policy is to avoid the retention of small and isolated parcels of land held by Council that serve no long-term benefit or purpose for the community.

4.5 Amending Existing Laneway Treatments (Not Permanently closed)

4.5.1 Council may consider amending an existing laneway treatment, Council requires the following;

- a. Completed Laneway Application with proposed new treatment; and
- b. Supporting documentation, the submission must contain or have attached relevant documents to support the proposed change in treatment.

4.5.2 Council will consider the Laneway Application and supporting documents for decision.

4.5.3 Council will determine if alterations will be applied to the laneway treatment.



POLICY

4.5.5 Council will not consider changes to laneway treatment under 12 months after a Council decision has already been implemented, amended, or declined.

4.6 Review process for existing laneway treatments

4.6.1 Laneways with active treatments applied will continue indefinitely until Council approves a change in treatment.

4.6.2 Laneways that have a treatment in place will be reviewed for alignment to the Policy each Council term.

4.7 Landowner contribution and purchase of land

4.7.1 All associated costs relating to the amalgamation of the laneway is the responsibility of the applicant or absorbing landowners.

4.7.2 A deposit will be required prior to actioning public consultation for the proposed permanent closure, in accordance with Council's fees and charges.

4.7.3 The deposit may be used as part of the amalgamation cost, with any unused funds returned if the land transfer doesn't proceed.

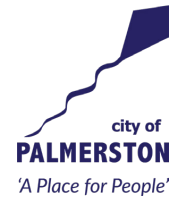
4.7.4 Where a landowner has agreed to amalgamate a portion of the closed laneway with their property, the value of the closed portion will be calculated as follows:

- a. The value of the original property will be determined,
- b. The combined (original plus portion of laneway) property will be calculated,
- c. The amount to be paid will be the difference between the two values.

4.7.5 The Land values and cost will be determined by a Certified Practicing Valuer and subject to review by the Valuer General where required.

5 ASSOCIATED DOCUMENTS

5.1 City of Palmerston Laneway Category Flow Charts



LANEWAY CATEGORISATION

Laneways are labelled into an 'Active Transport Category' as per below table. The category's consider the level of connectivity each laneways provides to the broader community such as proximity to public transport, shopping centres and schools.

Location	Non-essential	Less-essential	Essential
Achernar Ct to Tracey Park		•	
Alidade Cres to Wye Ct	•		
Altair Ct and Capella Ct	•		
Antares Ct to Tracey park		•	
Astrolabe Ct to Emery Ave	•		
Bagshaw Cres to Campden Ct	•		
Bagshaw Cres to Chung Wah Tce		•	
Bagshaw Cres to Houschilt Ct	•		
Bailey Cct to President Park		•	
Baldwin Dr to Azimuth Ct		•	
Beacon Cct to Sabbald Cct	•		
Beacon Ct to Chung Wah Tce	•		
Beaumont Park to Chung Wah Tce			•
Betelgeuse Ct to Chung Wah Tce	•		
Betelgeuse Ct to drain	•		
Boileau Ct to drain on Gunter Cct		•	
Bonson Tce to Calandrinia Ct		•	
Bonson Tce to Manson Ct		•	
Bonson Tce to Staghorn Ct		•	
Bristow Ct to Maurice Tce		•	
Broadarrow Cct to Drain			•
Buckland Ct to Rennie Ct	•		
Burnett Ct to Drive Ave			•
Cairn Ct to Chung Wah Tce	•		
Cairn Ct to Vernier park	•		
Caladium Ct to Tilston Ave			•
Callie Ct to Lambrick Ave - East	•		
Callie Ct to Lambrick Ave - West	•		
Canonbury Cct to Gwyn park	•		
Canonbury C ct to Temple Tce		•	
Canopus Ct to James Cct	•		

COMMITTEE AGENDA Attachment 8.2.2.3

Location	Non-essential	Less-essential	Essential
Capella Ct and Woodroffe drain	•		
Castor Ct to Temple Tce			•
Chemnitz Ct to Elrundie Ave	•		
Chin Gong Cct to Elrundie Ave	•		
Chin Gong to Widdup park			•
Chung Wah Tce to Strawbridge Cres			•
Compass Ct to James Cct	•		
Compass Ct to Tracey park	•		
Connaught Ct to Bakewell Primary School		•	
Connaught Ct to Rudolph Ct	•		
Cordia Ct to park on Lancewood St	•		
Cornwallis Cct to Temple Tce		•	
Corrick Ct to Lindsay Park	•		
Crake Ct to Forrest Pde		•	
Cuthbertson Cres to Elrundie Ave		•	
Cycas Ct to Temple Tce			•
Denebola Ct to Woodroffe Ave			•
Dillon Cct to Chung Wah Tce			•
Dutton Ct to Elrundie Ave			•
Dwyer Cct to Golf course - North		•	
Dwyer Cct to Golf Course - South	•		
Edgecumbe Ct to unnamed park		•	
Excelsa Ct to Rosebery Park	•		
Excelsa Ct to Lobelia Ct		•	
Extension to Tanami Ct to Lambrick Ave	•		
Favenc Ct to Chug Wah Tce	•		
Flametree Cct to Chung Wah Tce	•		
Flockhart Dr to Elrundie Ave to Campfire Ct to Brumby Ct			•
Forrest Pde to Landsborough St	•		
Goodall Ct to Tanami Ct	•		
Greer Ct to Widdup Park			•
Gumnut Way to Livistona Park	•		
Gumnut Way to Staghorn Ct		•	
Gunter Cct to drain	•		
Gunter Cct to Sibbald Cct			•

COMMITTEE AGENDA Attachment 8.2.2.3

Location	Non-essential	Less-essential	Essential
Hannibal Cres to Temple Tce			•
Harrison Cct to Sacred Heart Primary school	•		
Harrison Cct to Sextant Ct	•		
Harrison Cct to Temple Tce	•		
Helio Ct to Sibbald park	•		
Hogan Ct to Ascension park	•		
Invar Ct to Gunter Cct	•		
Kafcaloudes Cres to Schombacher Cct			•
Kriewaldt Cct to golf course			•
Landsborough St to Bill Lewis Park	•		
Lela Ct the Elrundie Ave	•		
Lobelia Ct to Rosebery Drv		•	
Lorna Lim Tce to unnamed park	•		
Mannikan Ct to Chung Wah Tce			•
Mannikan Ct/ Bakewell shops to Palmerston Escarpment Park			•
Martin Ct to Palmerston golf course		•	
Maurice Tce to Napier Ct			•
McGuire Cct to Elrundie Ave			•
McInnis Cct to Elrundie Ave		•	
McInnis Cct to President Park	•		
Melastoma Drv to Livistona Park	•		
Melastoma Drv to Temple Tce	•		
Moorhen to Buscall Ave	•		
Muckaninnie ct and Moulded drain/ Elrundie Ave	•		
Muckaninnie ct to Lindsay Park	•		
Noltenius Cct to Bagshaw Cres			•
Palmerston cct to Mansfield st			•
Parmentier Pl to Moulden Drain	•		
Politis ct to Beaumont Park Moulden	•		
Priest cct to Emery Ave			•
Priest cct to Phineaus ct		•	
Raffles road to Rosetta st	•		
Rilstone ct to Temple Tce Moulden			•

COMMITTEE AGENDA

Attachment 8.2.2.3

Location	Non-essential	Less-essential	Essential
Shortrede Ct to drain on Baldwin Dr	•		
Sibbald Cres to unnamed park	•		
Squatters Rd to Drain	•		
Squatters Rd to Walter Rd	•		
Staghorn Ct to Livistona Park	•		
Star Ct to Zenith Cct	•		
Stint Ct to drain on Lambrick Ave	•		
Stint Ct to Forrest Pde	•		
Strawbridge Cres to Politis Ct	•		
Tanami Ct to Lambrick Ave	•		
Transit Cct to Vernier Park		•	
Troughton Ct to Tracey park - North	•		
Troughton Ct to Tracey Park - South	•		
Vega Ct to Woodroffe Ave			•
Vernier Cct to Vernier Park		•	
Verniwr Cct to Emery Ave		•	
Waterhouse Cres to Widdup Cres		•	
Widdup Cres to Widdup Park	•		
Wiesener Ct to Woodroffe drain	•		
Wilfred Ct to Widdup Park	•		
William Ct to Widdup Park		•	
Zenith Cct to Palmerston cricket club oval and Woodroffe Primary School	•		

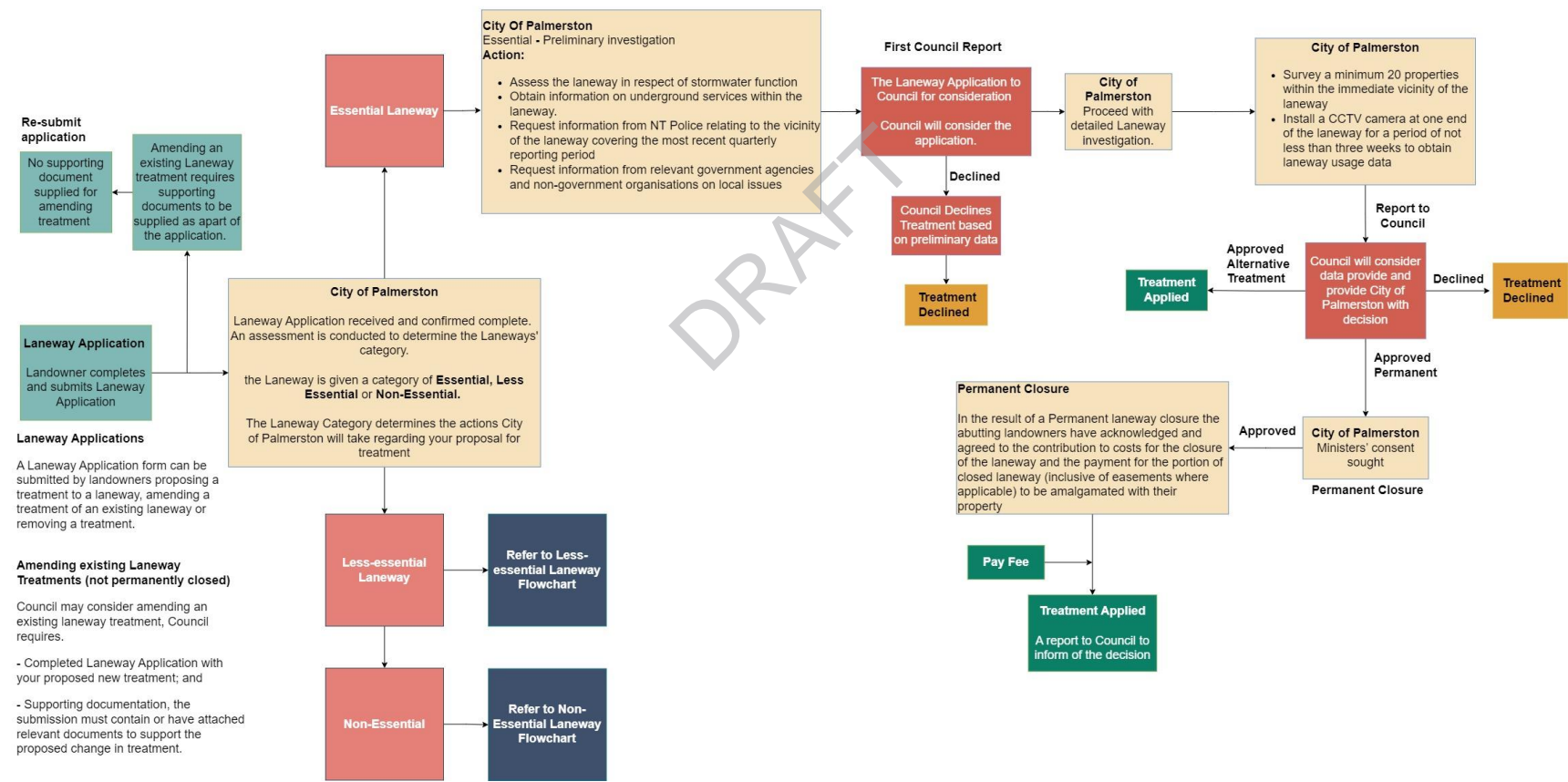


City of Palmerston - Laneway Management Policy Flowchart Active Transport Categorisation - Essential Laneway

Timeframe to first council report

Essential: 6 weeks

The the complete processing of a Laneway Application can take up to 12 months to reach a decision



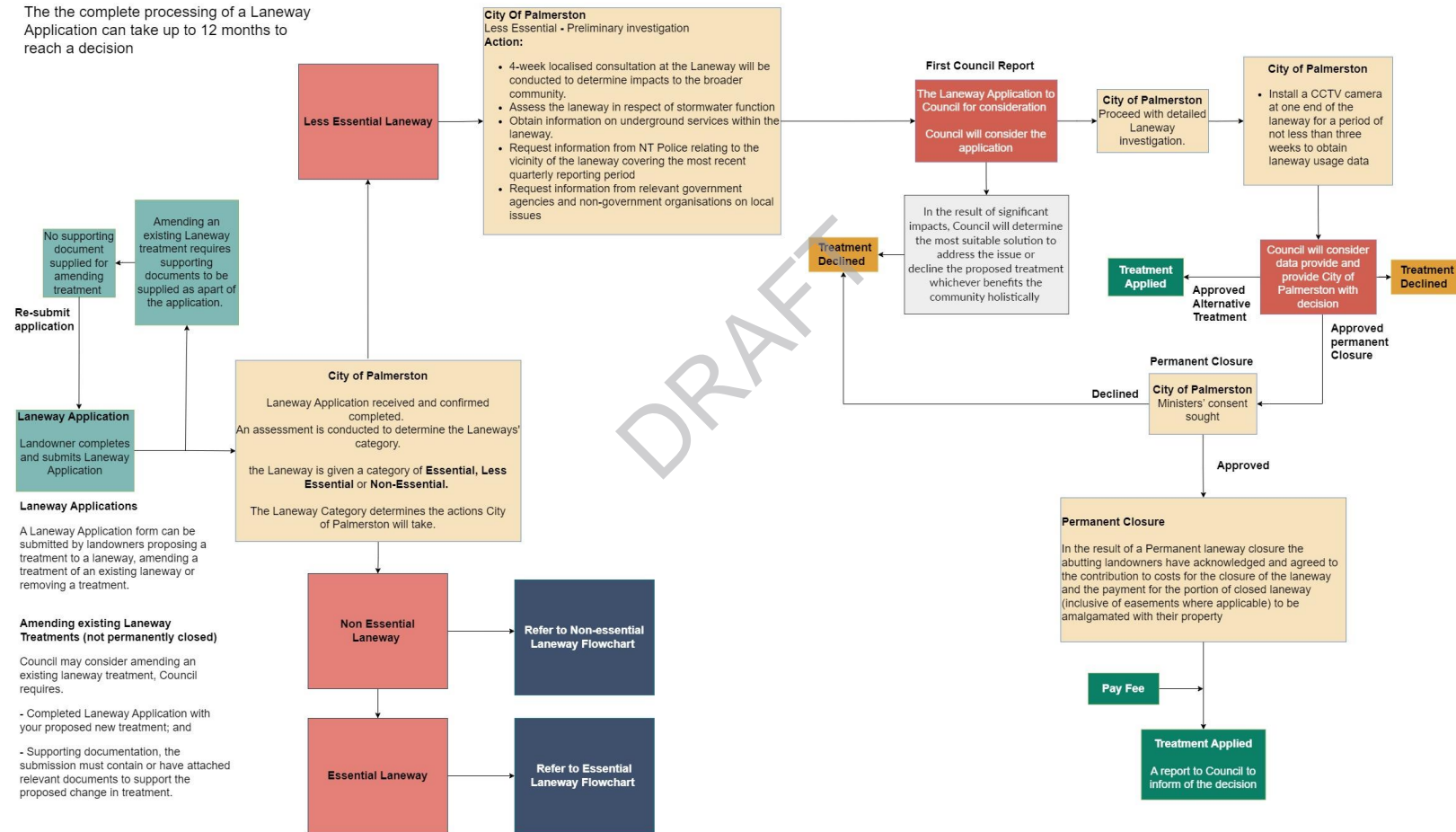


City of Palmerston - Laneway Management Policy Flowchart Active Transport Categorisation - Less Essential

Timeframe to first council report

Less Essential: 8 Weeks

The complete processing of a Laneway Application can take up to 12 months to reach a decision



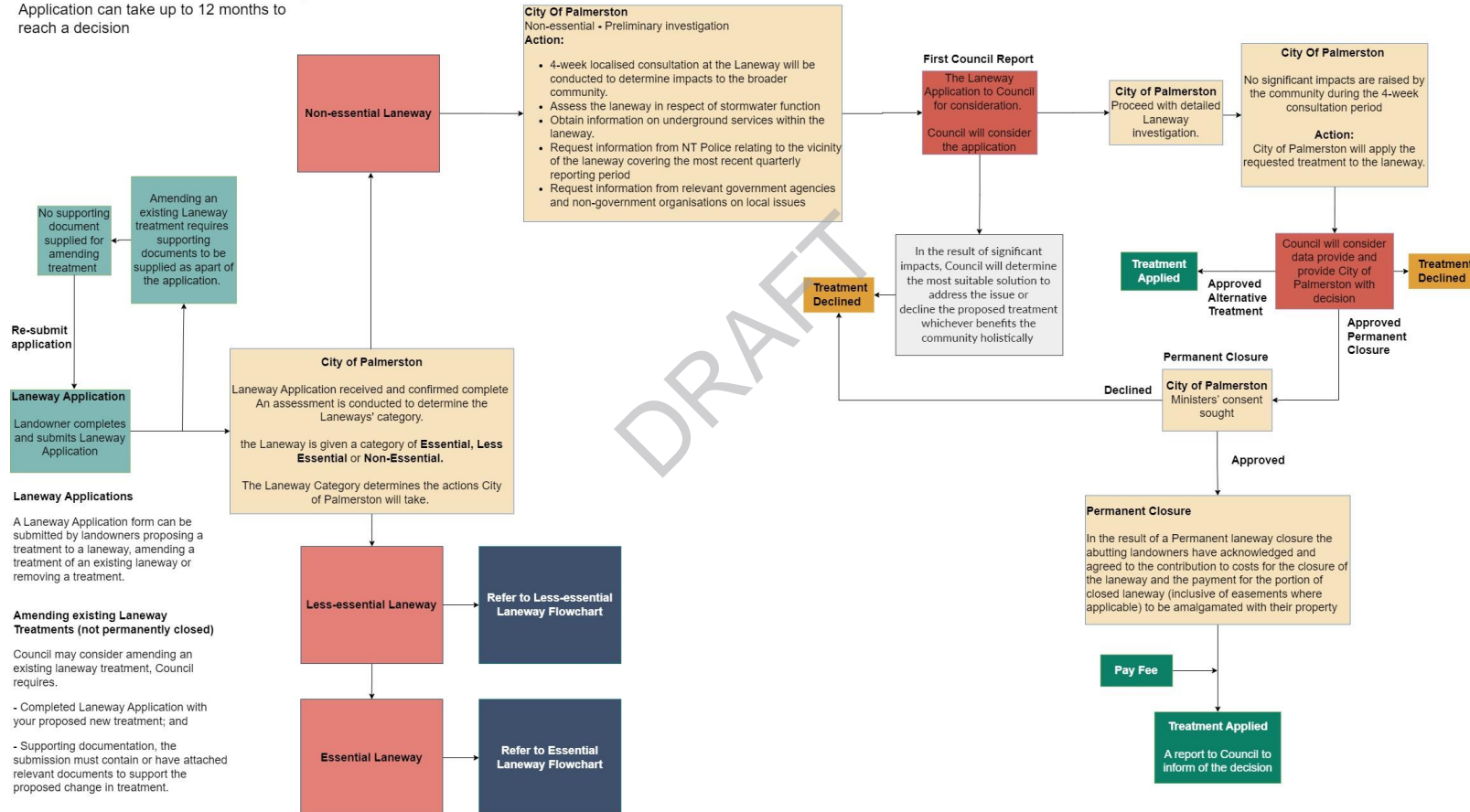


City of Palmerston - Laneway Management Policy Flowchart Active Transport Categorisation - Non-essential

Timeframe to first council report

Non-Essential: 8 Weeks

The complete processing of a Laneway Application can take up to 12 months to reach a decision



COMMITTEE REPORT

Committee Meeting

AGENDA ITEM:	8.2.3
REPORT TITLE:	Crime Prevention Through Environmental Design Outcomes Update
MEETING DATE:	Tuesday 13 August 2024
AUTHOR:	City Activation Manager, Matthew McNamara
APPROVER:	General Manager Community, Konrad Seidl

COMMUNITY PLAN

Family and Community: Palmerston is a safe and family friendly community where everyone belongs.

PURPOSE

This Report seeks to update the Community Safety Advisory Committee on City of Palmerston's Crime Prevention Through Environmental Design Audit.

KEY MESSAGES

- The Department of Chief Minister and Cabinet and City of Palmerston are partnering on a Crime Prevention Through Environmental Design audit for the Palmerston Central Business District and Goyder Square, funded with \$75,000 allocated by Department of Chief Minister and Cabinet.
- The primary aim was to develop a comprehensive report leveraging Crime Prevention Through Environmental Design principles to guide revitalisation and gentrification, aiming to reduce criminal and anti-social behaviour while enhancing commercial sustainability.
- City of Palmerston engaged consultants to carry out the Crime Prevention Through Environmental Design Audit whilst a further consultant was engaged to deliver a supplementary Place/Urban design report, further integrating safety and aesthetic considerations into the urban environment.
- The comprehensive Crime Prevention Through Environmental Design Audit Report, includes project background and objectives, a stakeholder engagement summary, report findings, recommendations, proposed monitoring and an evaluation plan.

RECOMMENDATION

THAT Report entitled Crime Prevention Through Environmental Design Outcomes Update be received and noted.

BACKGROUND

The Department of Chief Minister and Cabinet (DCM&C) approached City of Palmerston, seeking to collaborate on a Crime Prevention Through Environmental Design (CPTED) audit and subsequent report for the Palmerston Central Business District (CBD), an area inclusive of Goyder Square.

The key objective of this project is to develop a comprehensive report, leveraging CPTED principles, to guide the revitalisation and gentrification of the Palmerston CBD, including Goyder Square.

At the Community Safety Advisory Committee Meeting held on Tuesday 26 March April 2024, officers presented a receive and note report advising that a CPTED audit was soon to be conducted. Since this time Council has received a report outlining the findings.

A Place for People

DISCUSSION

City of Palmerston engaged Connley Walker and Urban Spark Studio for two (2) separate but complementary reports.

In April, Connley Walker conducted an extensive CPTED audit for the CBD encompassing Goyder Square.

The consultants employed a comprehensive methodology to assess the security situation in Palmerston CBD. Their approach included thorough site inspections, engagement with a diverse array of stakeholders, and a meticulous review of data, including police attendance figures, to formulate their findings.

During their visits, the consultants interacted with local business owners, Northern Territory Government (NTG) staff, community members, and Northern Territory Police to gather insights and firsthand accounts of the area's safety dynamics. This multi-faceted approach ensured a holistic understanding of the security landscape in Palmerston CBD.

Meanwhile, in July, Urban Spark Studio was commissioned with a supplementary Place/Urban design review to complement the findings of the CPTED Audit undertaken by Connley Walker. Urban Spark Studio are Urban Designers, Landscape Architects, Strategic Urban Planners and Placemakers. They are looking towards integrating emerging ideas and strategies for Palmerston that could form a framework over time. This report has also recently been received by Council Officers and is being reviewed.

The ongoing collaboration with NTG and relevant departments was crucial to implementing these recommendations effectively. The involvement of these bodies ensured that the strategies proposed were not only practical but also aligned with broader regional safety and development plans. This partnership aimed to leverage local knowledge and resources, with a combined goal of creating a more secure and vibrant Palmerston CBD.

These reports are extensive and are currently under review by Council Officers. The full CPTED audit report will be presented at a future Community Safety Advisory Committee meeting.

This project underscores City of Palmerston's commitment to creating a safe, welcoming environment that supports both commercial activity and community wellbeing.

CONSULTATION AND MARKETING

The following City of Palmerston staff were consulted in preparing this Report:

- City Activation Officer

In preparing this Report, the following external parties were consulted:

- Connley Walker
- Urban Spark Studio

POLICY IMPLICATIONS

There are no policy implications for this Report.

BUDGET AND RESOURCE IMPLICATIONS

The total cost of the project is \$75,000 and is funded via a grant from the Department of Chief Minister and Cabinet.

RISK, LEGAL AND LEGISLATIVE IMPLICATIONS

By addressing risk, legal, and legislative implications proactively, council can ensure that the CPTED audit leads to an effective and legally compliant intervention that enhances community safety while minimising potential liabilities and legal risks.



A Place for People

This Report addresses the following City of Palmerston Strategic Risks:

1. **Community Safety**
Failure of Council to effectively plan and deliver its role in community safety.

STRATEGIES, FRAMEWORK AND PLANS IMPLICATIONS

This report relates to the [Palmerston Local Economic Plan](#) (PLEP).

This report aligns to the PLEP by providing insights into local business challenges and opportunities. The survey findings will inform future economic development actions and strategies outlined in the PLEP.

COUNCIL OFFICER CONFLICT OF INTEREST DECLARATION

We the author and approving officer declare that we do not have a conflict of interest in relation to this matter.

ATTACHMENTS

Nil



A Place for People

9 INFORMATION AND CORRESPONDENCE

9.1 Information

9.2 Correspondence

10 GENERAL BUSINESS

11 NEXT COMMITTEE MEETING

THAT the next Community Safety Advisory Committee Meeting of Council be held on Tuesday, 12 November 2024 at 5:30pm in the Council Chambers, Civic Plaza, 1 Chung Wah Terrace, Palmerston.

12 CLOSURE OF MEETING



MINUTES

Community Safety Advisory Committee Meeting

Tuesday 14 May 2024

The Advisory Committee Meeting of the City of Palmerston held in the Council Chambers, Civic Plaza, 1 Chung Wah Terrace, Palmerston, NT, 0830

Council business papers can be viewed on the City of Palmerston website www.palmerston.nt.gov.au

'A Place for People'



A Place for People

COMMITTEE MINUTES

Minutes of Community Safety Advisory Committee Meeting
held in Council Chambers
Civic Plaza, 1 Chung Wah Terrace, Palmerston
on Tuesday 14 May at 5:30pm.

PRESENT

COMMITTEE MEMBERS	Councillor Damian Hale (Chair) Councillor Lucy Morrison (Member) Mayor Athina Pascoe-Bell (Ex-officio) Superintendent Meghan Funnell, Northern Territory Police Sharon Binns, Senior Community Member Representative Brandon Evans, Department of the Chief Minister and Cabinet Representative (Proxy for Sarah Gotch)
STAFF	Chief Executive Officer, Luccio Cercarelli General Manager Community, Konrad Seidl Minute Secretary, Georgina Davies
GALLERY	Janelle Tonkin, Assistant Commissioner Michael Soler, Regional Manager - Northern - Territory Community Safety Coordination Centre Kate Chambers, Tasmanian Police Commander

Initials: _____

MINUTES COMMUNITY SAFETY ADVISORY COMMITTEE MEETING - 14 MAY 2024

28



A Place for People

COMMITTEE MINUTES

1 ACKNOWLEDGEMENT OF COUNTRY

City of Palmerston acknowledges the Larrakia people as the Traditional Custodians of the Palmerston region. We pay our respects to the Elders past, present and future leaders and extend that respect to all Aboriginal and Torres Strait Islander people.

2 OPENING OF MEETING

The Chair declared the meeting open at 5:33pm.

3 APOLOGIES AND LEAVE OF ABSENCE

3.1 Apologies

Moved: Councillor Morrison
Seconded: Mayor Pascoe-Bell

1. THAT the apology received from Fran Ramsey for 14 May 2024 be received and noted.
2. THAT the apology received from Councillor Garden for 14 May 2024 be received and noted.

CARRIED CSAC10/47 – 14/05/2024

3.2 Leave of Absence Previously Granted

Moved: Councillor Hale
Seconded: Mayor Pascoe-Bell

THAT it be noted Sarah Gotch will be on leave of absence as previously granted on 26 March 2024, for the period of 12 April 2024 to 12 June 2024 inclusive.

CARRIED CSAC10/48 – 14/05/2024

3.3 Leave of Absence Request

Nil

4 DECLARATION OF INTEREST

4.1 Committee Members

Nil

4.2 Staff

Nil

5 CONFIRMATION OF MINUTES

5.1 Confirmation of Minutes

Moved: Councillor Morrison
Seconded: Meghan Funnell

THAT the Minutes of the Community Safety Advisory Committee Meeting held on Tuesday 26 March 2024 pages 22 to 27 be confirmed.

CARRIED CSAC10/49 – 14/05/2024

Initials: _____

MINUTES COMMUNITY SAFETY ADVISORY COMMITTEE MEETING - 14 MAY 2024

29



A Place for People

COMMITTEE MINUTES

5.2 Business Arising from Previous Meeting

Nil

6 DEPUTATIONS AND PRESENTATIONS

Moved: Sharon Binns
Seconded: Mayor Pascoe-Bell

THAT the presentation by Superintendent Meghan Funnell, Regional Manager Michael Soler, Assistant Commissioner Janelle Tonkin be received and noted.

CARRIED CSAC10/50 - 14/05/2024

Michael Soler, Janelle Tonkin and Brandon Evans left the meeting at 6.30pm.

7 CONFIDENTIAL ITEMS

7.1 Moving Confidential Items into Open

Nil

7.2 Moving Open Items into Confidential

Nil

7.3 Confidential Items

Nil

8 OFFICER REPORTS

8.1 Action Reports

Nil

8.2 Receive and Note Reports

8.2.1 Safe Communities - Network Update

Moved: Mayor Pascoe-Bell
Seconded: Councillor Morrison

THAT Report entitled Safe Communities - Network Update be received and noted.

CARRIED CSAC10/51 - 14/05/2024

8.2.2 Animal Management By-Laws

Moved: Sharon Binns
Seconded: Councillor Morrison

1. THAT Report entitled Animal Management By-Laws be received and noted.
2. THAT The Community Safety Advisory Committee noted to congratulate and thank staff for efforts in the By-laws implementation.

CARRIED CSAC10/52 - 14/05/2024

Initials: _____



A Place for People

COMMITTEE MINUTES

8.2.3 Infrastructure Safety Update

Moved: Councillor Morrison
Seconded: Sharon Binns

THAT Report entitled Infrastructure Safety Update be received and noted.

CARRIED CSAC10/53 - 14/05/2024

9 INFORMATION AND CORRESPONDENCE

9.1 Information

Nil

9.2 Correspondence

Nil

10 GENERAL BUSINESS

Nil

11 NEXT COMMITTEE MEETING

Moved: Mayor Pascoe-Bell
Seconded: Sharon Binns

THAT the next Community Safety Advisory Committee Meeting of Council be held on Tuesday, 13 August 2024 at 5:30pm in the Council Chambers, Civic Plaza, 1 Chung Wah Terrace, Palmerston.

CARRIED CSAC10/54 - 14/05/2024

12 CLOSURE OF MEETING

Moved: Mayor Pascoe-Bell
Seconded: Sharon Binns

THAT the meeting of the Community Safety Advisory Committee held in Council Chambers, Civic Plaza, Palmerston on 14 May 2024 closed at 6:50pm.

CARRIED CSAC10/55 - 14/05/2024

The Chair declared the meeting closed at 6:50pm.

Chair

Print Name

Date

Initials: