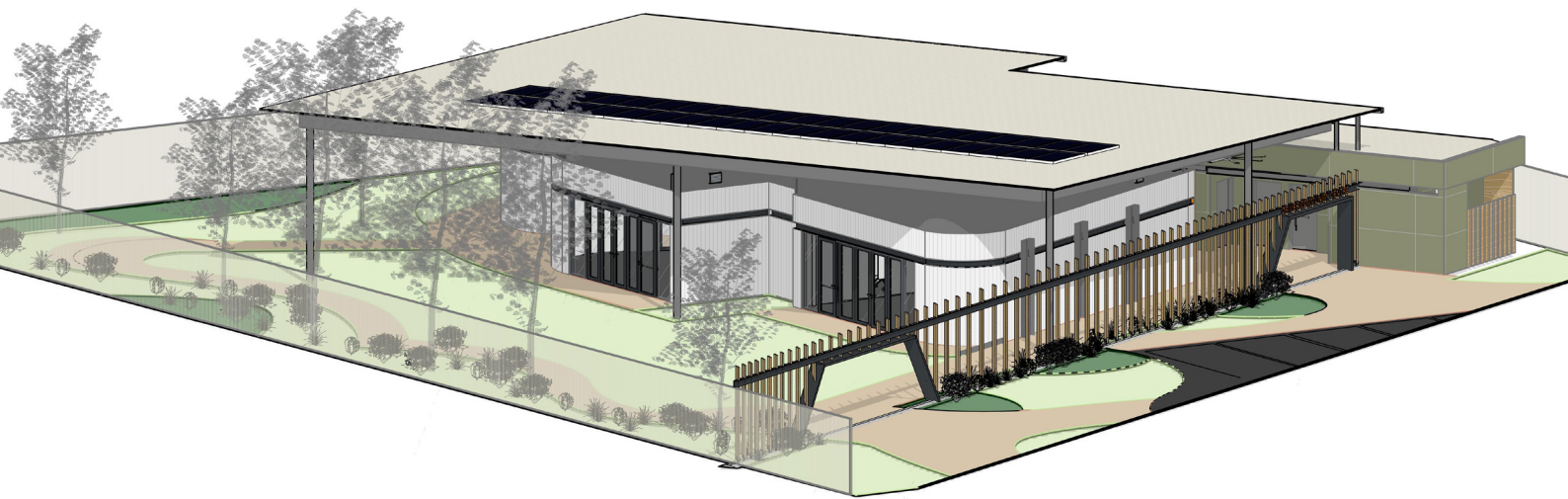


Driver Community Centre

Proposed design

City of Palmerston are seeking feedback from the community on the proposed design of the Driver Community Centre.

The redevelopment of the facility aims to meet the growing needs of the Palmerston community, now and into the future.



Project information

The Driver Community Centre, located at 29 Driver Avenue, was constructed in the 1980's as a childcare facility and is no longer fit for purpose. Learnings from previous community consultations and current usage of the facility were taken into consideration to develop a set of proposed designs for the purpose of the community consultation.

Based on these designs, the construction of the facility is estimated to be approximately \$3 million. Council has set aside further funds to support a more detailed design, which will incorporate input from the community engagement process. At this stage a project timeline cannot be established until funding for the redevelopment has been secured.

The proposed design incorporates three separate pods under a single roof structure, with a wide single-entry foyer that also incorporates the amenities. The pods are designed as different sizes, each with its own access, storage and kitchenette facility. Each pod will have slightly different technology provided to enable specific users to find the best fit for their needs.



SITE PLAN
SCALE 1:100

The preliminary design considerations include:

- **Flexibility** - separate bookable spaces that can be accessed at overlapping times by multiple groups of a range of sizes.
- **Landscape** - integrate landscaping throughout the space providing an activated, safe and inclusive place to experience learning, socialising and play.
- **Sustainability** - the objective of this facility will be to strive beyond minimum sustainability and energy efficient targets in every aspect

Proposed design features:

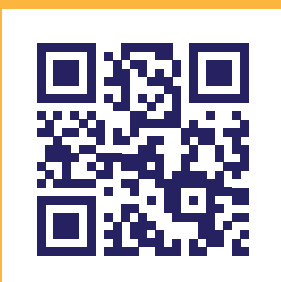
- Three (3) separate bookable 'pods', each with their own landscaped areas and storage space with no 'shared walls', providing extra privacy from each other
- A general use area including a full kitchen, a parents room, accessible bathroom facilities with male/female/gender neutral bathrooms
- An outdoor space can be accessed will be able to be used with full access to the general amenities area, without disturbing the separate pods spaces

What's next?

Community consultation on the preliminary proposed designs will open from 14 August for 8 weeks.

The community will have their opportunity to provide feedback on the proposed designs through the website, social media, through community activations and direct to council.

For more information on the project and to provide feedback online scan the QR code.



Contact

For all further feedback and information, please contact our consultation team

08 8935 9937
media@palmerston.nt.gov.au