

# Palmerston Play Space Strategy DRAFT SUMMARY





# Why a Play Space Strategy

Play is a critical part of growth and learning for children, helping them to develop physically, emotionally, socially, and intellectually. It supports the learning of lifelong skills such as problem solving, independence, self-awareness, creativity, resilience, and the ability to deal with change.

Play spaces have a key role in supporting the health and wellbeing of the Palmerston community, providing important opportunities for children to play, to explore, and to learn. They are also important for young people and adults, providing spaces for socialising, exercise, active recreation, and play.



Priority Areas and Strategic Actions

## The Strategic Steps

Vision

Guiding Principles

Hierarchy

Design Guidelines





# Issues and opportunities

- A clear play-space hierarchy will provide the optimum distribution of play spaces across Palmerston.
- Improved connections between play spaces and other community places
- Improving the surrounding landscape and amenities for play spaces
- Ensuring play spaces are available for communities in need
- Community information about play spaces in Palmerston
- Sustainability embedded in the planning of play spaces
- Play spaces support community health and wellbeing
- Improved play space access for people of all abilities
- More natural, diverse and creative play experiences
- A focus on safety for play spaces
- Population growth





## Vision

*Play is an important part of community life and the City of Palmerston is committed to providing a network of play spaces to enable children, young people, adults, and families to play, meet and socialise, be closer to nature and be active. Our quality play spaces will be welcoming, creative and accessible to all, positively contributing to the liveability of our city.*



## Guiding Principles

- Importance of Play
- Play environments as community gathering spaces
  - Diverse & quality play spaces
  - Access for all
  - Community involvement & influence
  - Engagement with nature
  - Sustainability
  - Partnering



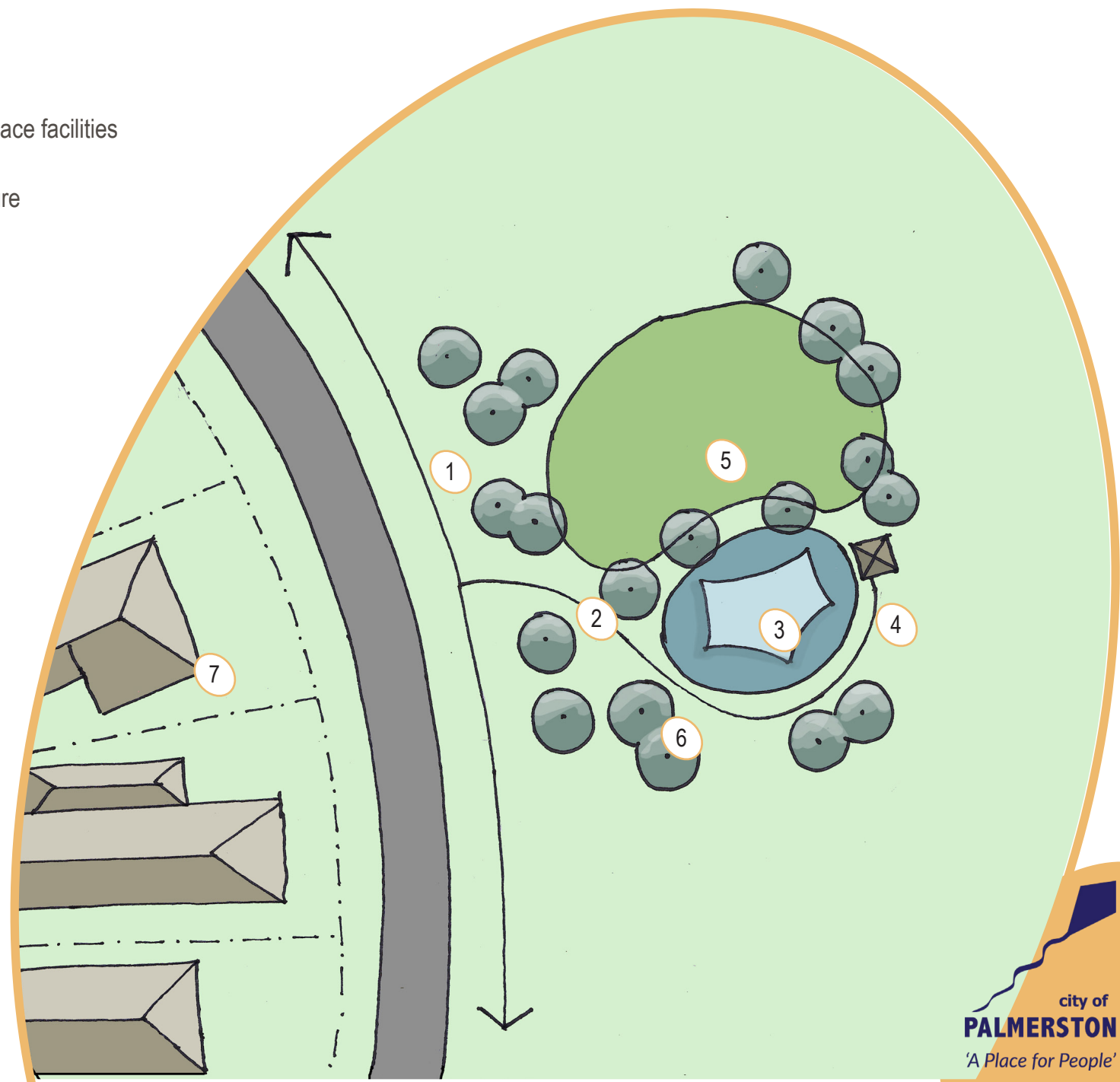
# Play Space Hierachy

Features	Play Space Classification		
	Local	Major	Regional
Indicative Catchment	Located within 500 metres of every resident.	Located within 2km of all residents.	Strategically located to provide access by bicycle, car or public transport by all residents.
Setting	Local play spaces meet the needs of the local community, provide for passive recreation and have a minimum level of support amenities and facilities.	Major play spaces cater for a broader catchment, provide a range of play experiences, and are supported by adequate support amenities and facilities.	Regional play spaces are destination sites being large spaces with specially designed play spaces and play elements featuring a diversity of play opportunities and with extensive support amenities and facilities to meet the needs of large numbers of people arriving by car or public transport.
Play Elements	A playground feature, natural play element, and suitable for people of all abilities.	Several playground features, several natural play elements, facilities for active recreation, and suitable for people of all abilities.	Extensive playground features, extensive natural elements, facilities for active recreation, and suitable for people of all abilities.
Landscape and plantings	A well-maintained park setting including canopy trees for shade.	A well-maintained park setting including canopy trees for shade and additional plantings of interest.	A well-maintained park setting over a large area including canopy trees for shade and a mix of plantings.
Path of travel	Shared paths to playground.	Shared paths to playground and additional paths through park.	Shared paths to playground, additional paths through park and to connect with other open space or play areas.
<b>Amenities</b>			
Water bubblers	Yes	Yes	Yes
Seating	Yes	Additional	Extensive
Litter bins	Yes	Yes	Yes
Tables and chairs		Limited	Extensive
Shelter		Yes	Yes
Public toilets		Yes	Yes
BBQs		Yes	Yes
Bike racks		Yes	Yes



# Play Space Hierarchy - local

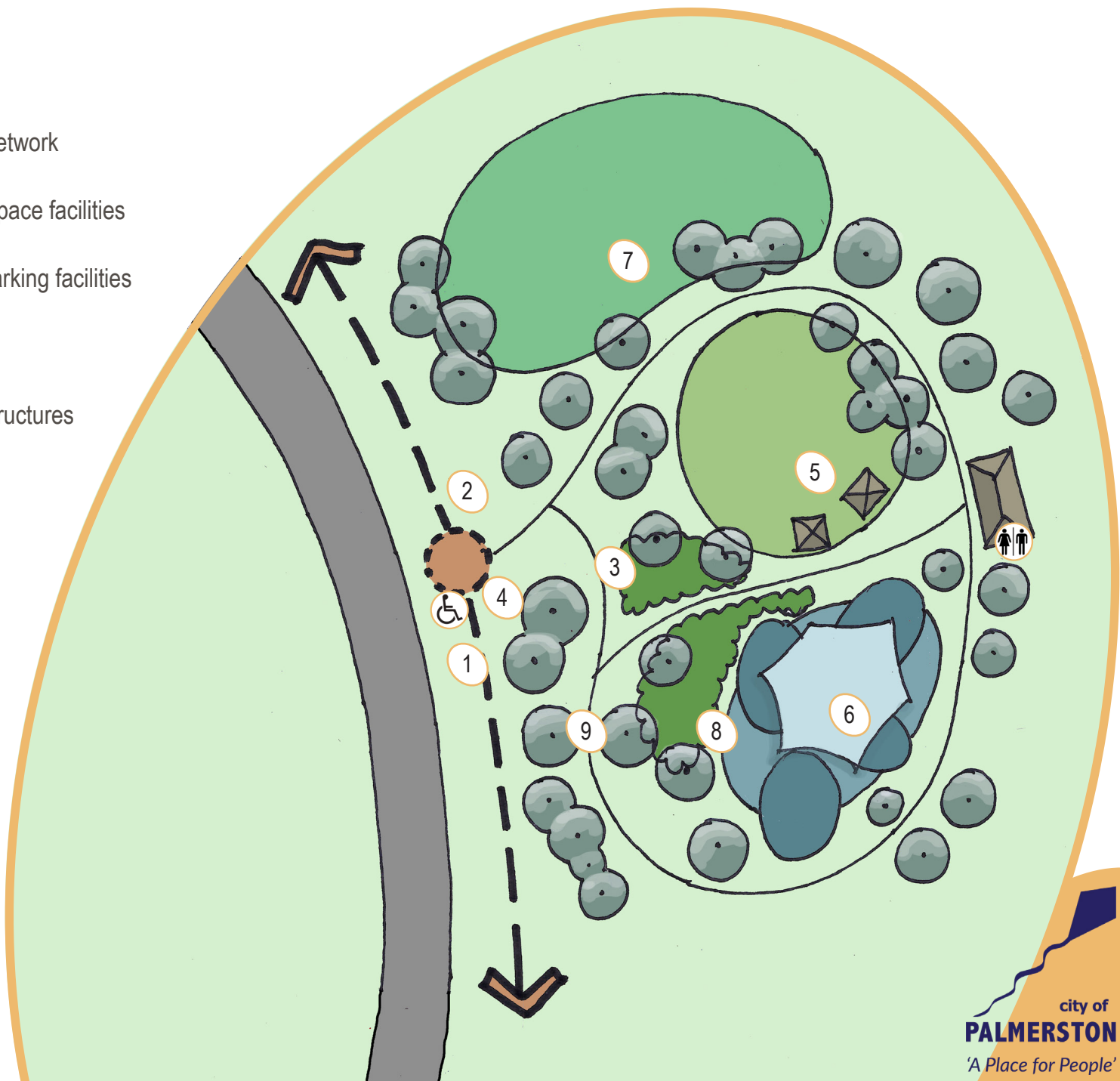
- 1 Neighbourhood path network
- 2 Disabled accessible paths connecting play space facilities
- 3 Small inclusive playground with shade structure
- 4 Seating area
- 5 Dryland grass kickabout area
- 6 Large canopy shade trees
- 7 Residential houses overlooking play space







# Play Space Hierarchy - major

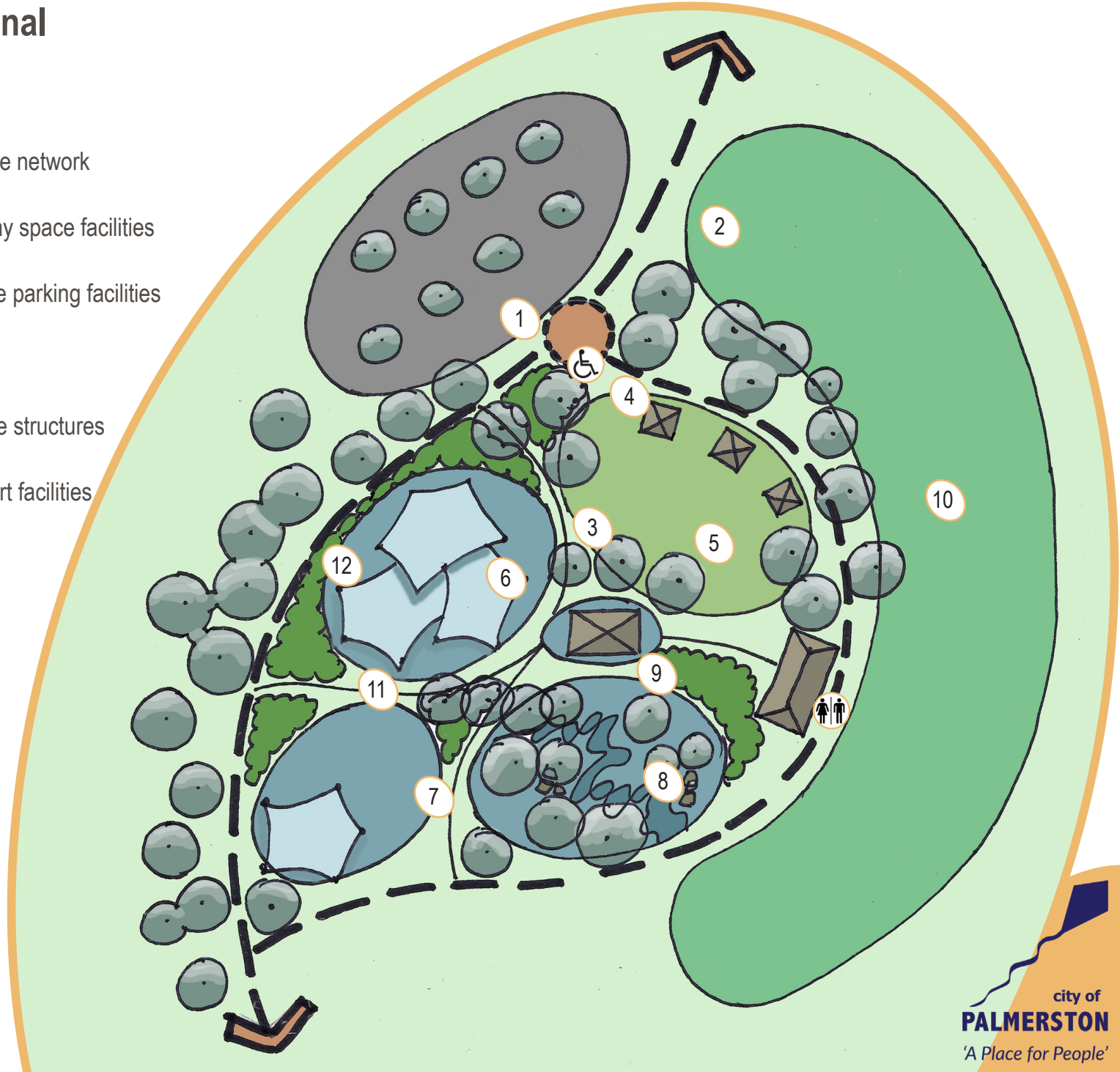
- 1 On-street car parking
- 2 Cycle path connected to the broader cycle network
- 3 Disabled accessible paths connecting play space facilities
- 4 Play space 'welcoming gateway' with bike parking facilities
- 5 Picnic / BBQ area with shelters
- 6 Multi-age inclusive playground with shade structures
- 7 Irrigated grass kickabout area
- 8 Integrated landscaping and gardens
- 9 Large canopy shade trees
-  Disabled parking
-  Toilet and change facilities





# Play Space Hierarchy - regional

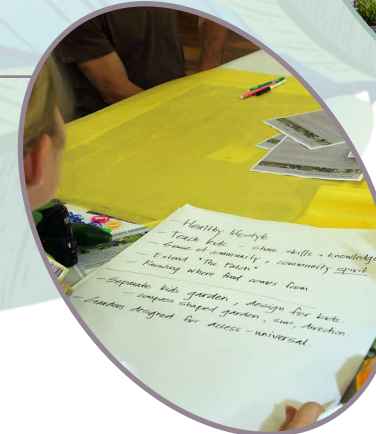
- 1 Car park with shade trees
  - 2 Cycle path connected to the broader cycle network
  - 3 Disabled accessible paths connecting play space facilities
  - 4 Play space 'welcoming gateway' with bike parking facilities
  - 5 Picnic / BBQ area with shelters
  - 6 Multi-age inclusive playground with shade structures
  - 7 Older age activity area, possible hardcourt facilities
  - 8 Nature based play and exploration area
  - 9 Central meeting area
  - 10 Irrigated grass kickabout area
  - 11 Integrated landscaping and gardens
  - 12 Large canopy shade trees
-  Disabled parking
  -  Toilet and change facilities





## What we will focus on

- Increasing the diversity and quality of the play experiences and environments in Palmerston. Incorporate more nature-based play opportunities, more active recreation equipment like basketball half courts and exercise equipment and include creative elements.
- Making it easier for the community to find out about play spaces through better information and delivering activities and programs from play spaces
- Implementing the play space planning framework including the guiding principles, hierarchy and design guidelines
- Improving the connectivity and linkages between play spaces, open space, and other community infrastructure
- Increasing the resources directed towards maintaining and upgrading play spaces
- Increasing community involvement in the planning and design of play spaces.





For further information refer to the  
Draft Play Space Strategy

To search for local parks in your area

<https://www.palmerston.nt.gov.au/live/facilities-recreation/recreation/parks-and-playgrounds>

